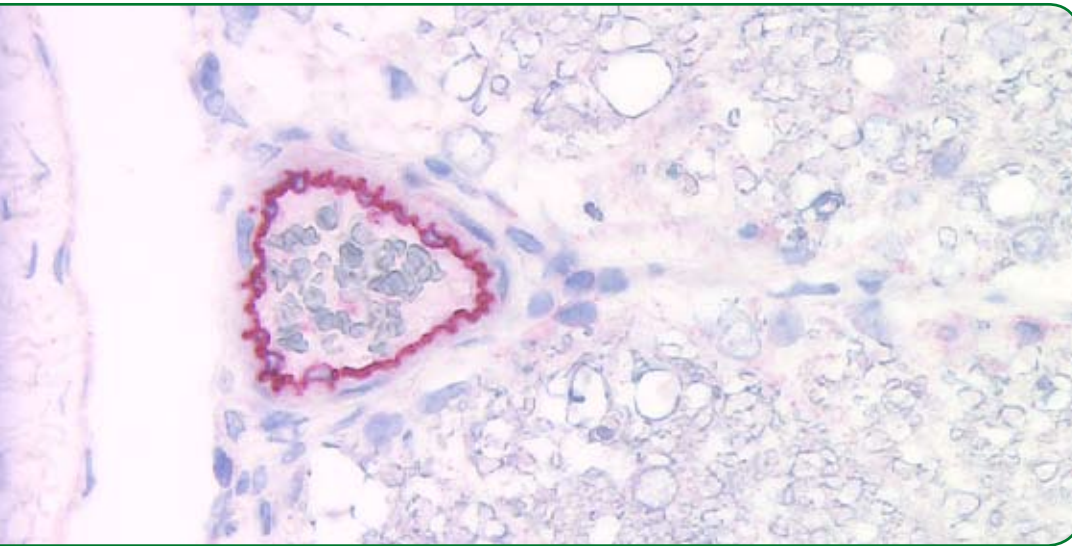


dianova

Catalog Number DIA 310
Size 100 ug
Specificity Murine CD31 (PECAM-1)
(endothelial cells)
Class Monoclonal
Clone SZ31
Host / Isotype Rat / IgG2a
Form Lyophilized powder
Applications Immunohistochemistry
- formalin-fixed paraffin (FFPE)
- frozen
Western blot
Price 349,00 Euro*

*Price as of November 2009, excl. German VAT, incl. free shipping inside Germany



Phone + 49 (0) 40 45 06 70 • Fax +49 (0) 40 45 06 74 90
info@dianova.de • order@dianova.de • www.dianova.de

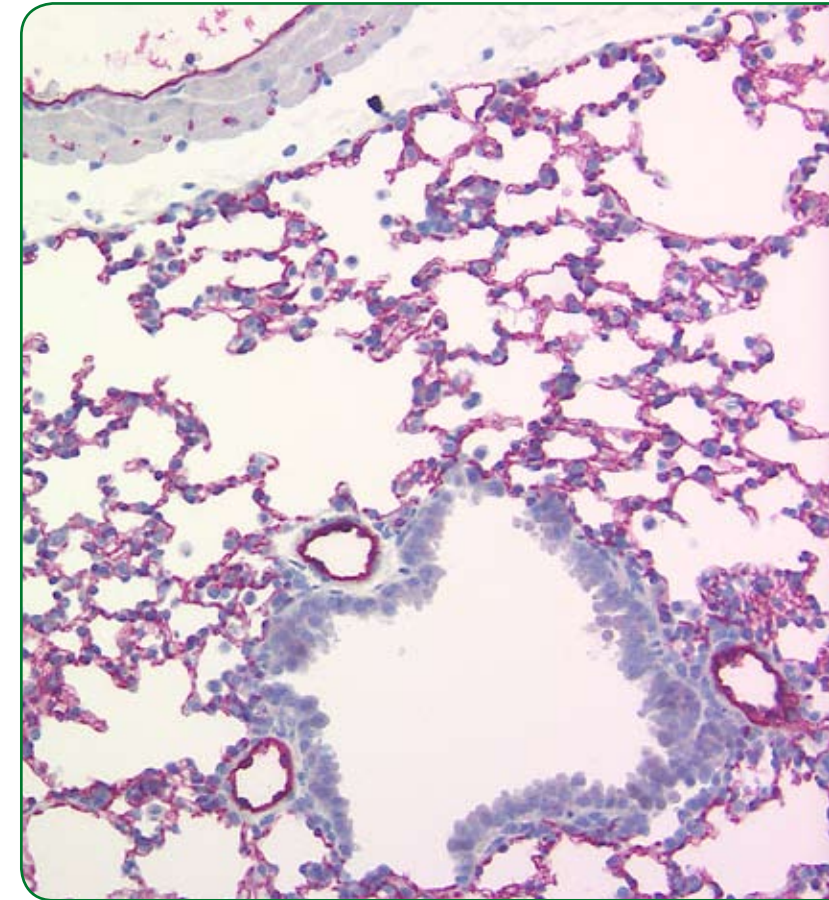
dianova
Gesellschaft für biochemische, immunologische
und mikrobiologische Diagnostik mbH

dianova

Warburgstr. 45 • 20354 Hamburg, Germany
register court: Amtsgericht Hamburg,
Abteilung B, HRB 31405
CEO: Jürgen A. Frerichs

dianova

dianova



Anti-murine CD31 (PECAM-1) in formalin-fixed paraffin sections

The antibody clone SZ31 is the first antibody that specifically reacts with murine CD31 in standard formalin-fixed paraffin-embedded tissues!

Works in FFPE-tissues!
Free Sample
available

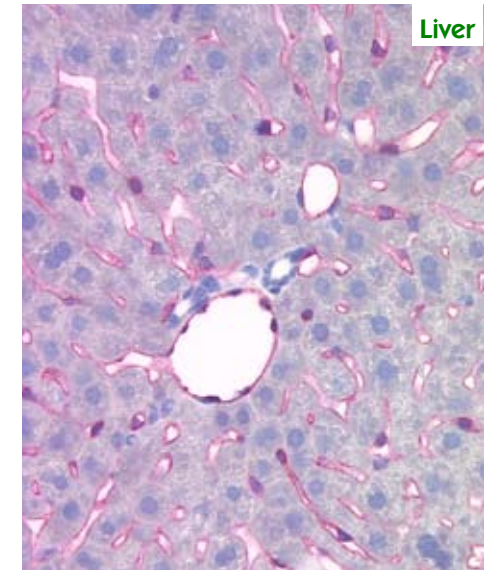
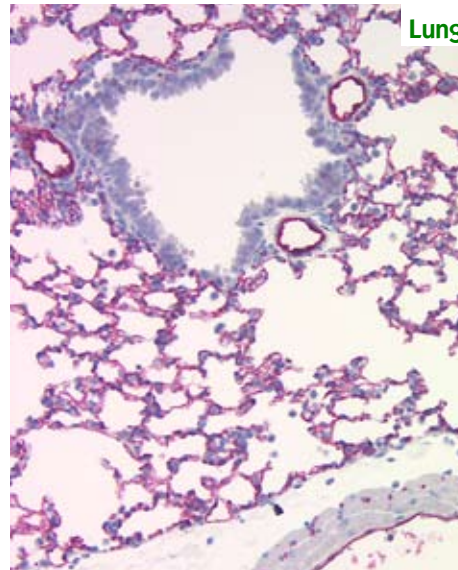
Clone SZ31: The first antibody clone that specifically reacts with murine CD31 (PECAM-1) in formalin-fixed paraffin-embedded tissues

CD31, also known as PECAM-1 (Platelet Endothelial Cell Adhesion Molecule-1) is expressed on the surface of embryonic and adult endothelial cells. CD31 is a 130kDa integral membrane glycoprotein and a member of the immunoglobulin superfamily. CD31-mediated endothelial cell-cell interactions play a major role in angiogenesis. Until now pathophysiological studies of CD31 in murine model systems had limitations because standard formalin-fixed sections were problematic. The clone SZ31 eliminates these restrictions by allowing high quality immunohistochemical analysis of standard formalin-fixed paraffin sections in mice.

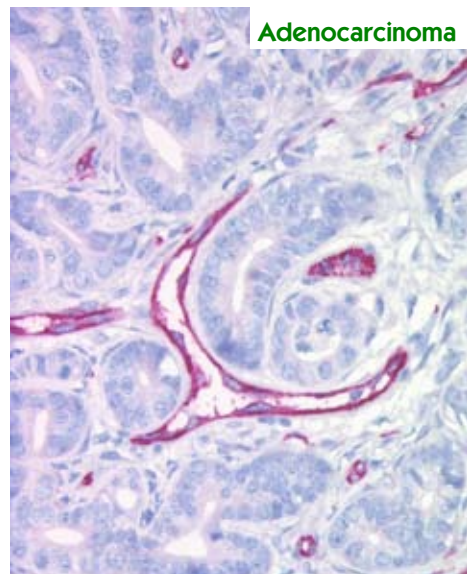
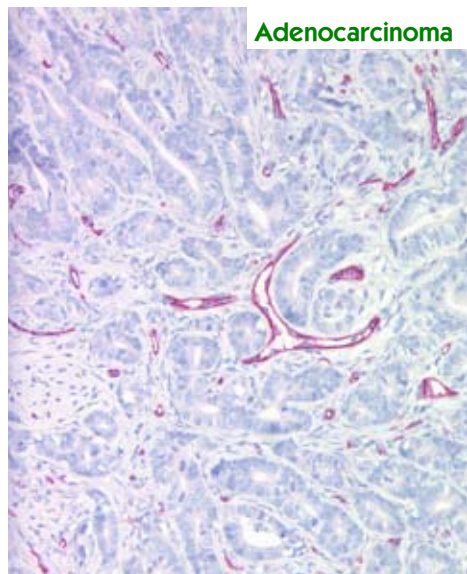
Immunohistochemistry of mouse CD31 (PECAM-1) in standard formalin-fixed paraffin-embedded tissue sections

All sections were stained by Avidin-Biotin-Alkaline phosphatase method according to standard procedures with antigen retrieval by high-temperature heating in citrate buffer and counterstaining with Hämatoxylin-Papanicolaou.

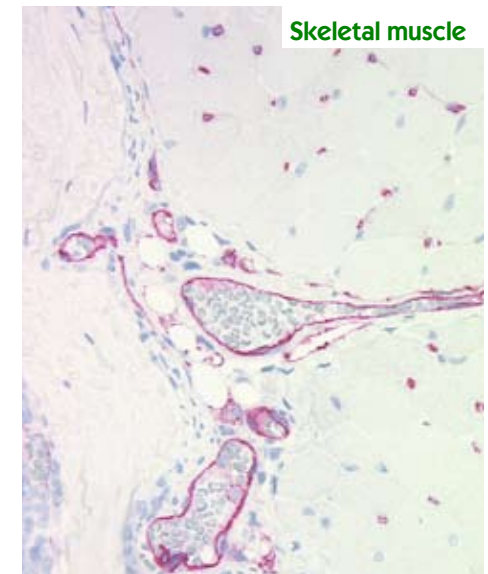
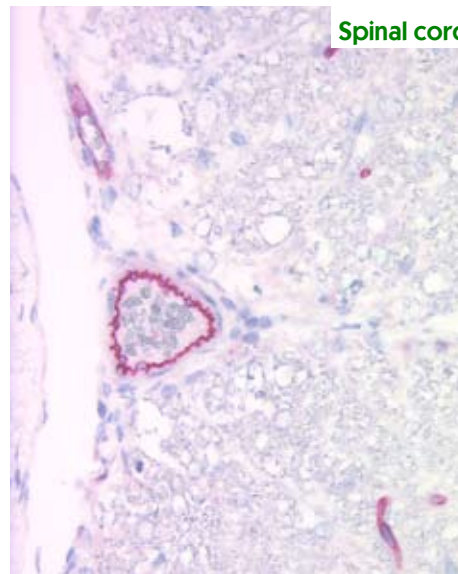
(pictures courtesy of Prof. Dr. H. Stein, Institute of Pathology, Charité, Berlin, Germany)



Immunostaining of endothelial cells in vessels and capillaries of murine lung and liver with anti-CD31 antibody clone SZ31.



The antibody clone SZ31 reacts specifically with endothelial cells in vessels and capillaries of murine adenocarcinoma.



Specific staining of endothelial cells in vessels and capillaries of murine spinal cord and skeletal muscle with antibody clone SZ31.