



Keratin 14

Epitope Specific Rabbit Antibody

Catalog #DLN-14015, DLN-14016, or DLN-14017 (0.1ml, 0.5ml, or 1.0ml at 200µg/ml)

Catalog #DLN-14018 (7.0ml)

Description:

Keratin 14 belongs to the type A (acidic) subfamily of low molecular weight keratins and exists in combination with keratin 5. Keratin 14 has been studied as a prognostic marker in breast cancer.

Comments: This antibody is excellent for staining of formalin-fixed, paraffin-embedded tissues.

Mol. Wt. of Antigen: 50kDa

Epitope: C-terminus

Species Reactivity: Human. Others not tested.

Immunogen: A synthetic peptide derived from C-terminal of human Keratin 14

Applications and Suggested Dilutions:

- Western Blotting (Ab 1µg/ml for 2 hours at RT)
- Immunohistology (Formalin/paraffin)
(Ab 1:200 for 10 min at RT)
- * [Staining of formalin-fixed tissues requires digesting tissue sections with Pepsin for 10 min at 37C]

The optimal dilution for a specific application should be determined by the investigator.

Positive Control: A431 cells. Skin or Squamous cell carcinoma

Cellular Localization: Cytoplasmic

Supplied As:

Affinity purified antibody fraction from rabbit anti-serum. Prepared in 10mM PBS, pH 7.6, with 0.2% BSA and 15mM sodium azide.

or

Prediluted antibody which is ready-to-use for immunohistochemical staining.

Storage and Stability:

Store vial at 4°C. When stored at 2-8°C, this antibody is stable for 24 months.

Limitations and Warranty:

Our products are intended FOR RESEARCH USE ONLY and are not approved for clinical diagnosis, drug use or therapeutic procedures. No products are to be construed as a recommendation for use in violation of any patents. We make no representations, warranties or assurances as to the accuracy or completeness of information provided on our data sheets and website. Our warranty is limited to the actual price paid for the product. Dianova is not liable for any property damage, personal injury, time or effort or economic loss caused by our products.

dianova GmbH

Warburgstr. 45 • 20354 Hamburg

Telefon (040)45067-0 • Telefax (040) 45067-490 • www.dianova.de



Keratin 14

Epitope Specific Rabbit Antibody

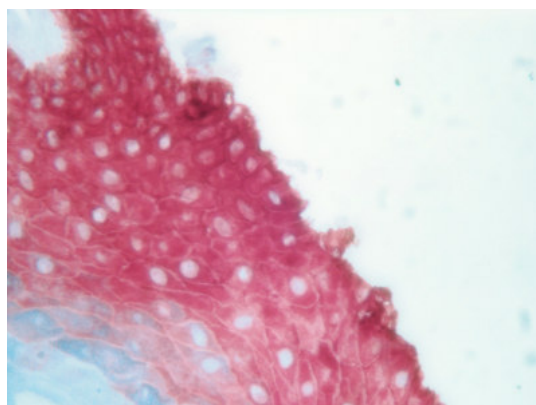
Catalog #DLN-14015, DLN-14016, or DLN-14017 (0.1ml, 0.5ml, or 1.0ml at 200µg/ml)

Catalog #DLN-14018 (7.0ml)

Material Safety Data:

This product is not licensed or approved for administration to humans or to animals other than the experimental animals. Standard Laboratory Practices should be followed when handling this material. The chemical, physical, and toxicological properties of this material have not been thoroughly investigated. Appropriate measures should be taken to avoid skin and eye contact, inhalation, and ingestion. The material contains 0.09% sodium azide as a preservative. Although the quantity of azide is very small, appropriate care should be taken when handling this material as indicated above. The National Institute of Occupational Safety and Health has issued a bulletin citing the potential explosion hazard due to the reaction of sodium azide with copper, lead, brass, or solder in the plumbing systems. Sodium azide forms hydrazoic acid in acidic conditions and should be discarded in a large volume of running water to avoid deposits forming in metal drainage pipes.

For Research Use Only



Human skin stained with anti-Keratin 14, Cat# DLN-14017

dianova GmbH

Warburgstr. 45 • 20354 Hamburg

Telefon (040)45067-0 • Telefax (040) 45067-490 • www.dianova.de