
Anti-HA Tag Epitope Tag Antibody Mouse Monoclonal Antibody Clone HA.C5 / C10

Product Information

Catalog No.:

DIA-1000 (100µg)

Clone:

HA.C5 / C10

Concentration:

1 mg/ml

Isotype:

Mouse IgG3

Specificity:

Recognizes N-terminal, C-terminal or internal HA-tagged fusion proteins

Immunogen:

YPYDVPDYA (HA) synthetic peptide conjugated to KLH

Physical State:

Liquid

Presentation:In 10mM PBS with 0.05% NaN₃, pH 7.2.

Antibody purified from mouse ascites fluid by Protein A affinity chromatography

Applications:

Dot Blot, ELISA, Immunoprecipitation, Immunohistochemistry, Western blot

Dilutions:

1:500-2000 Immunohistochemistry (IHC)

1:1000--3000 Western Blot (with ECL, incubate 1h at RT)
(Optimal dilutions should be determined by the end user. For best results with other assays (e.g.: Dot, ELISA, IP, etc), please determine optimal working dilution by titration test)**Sensitivity**

WB (with ECL): 1-5ng of HA-tagged fusion proteins.

Storage and Stability

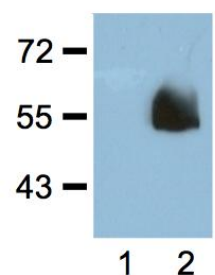
Store at -20°C for up to 2 years. Centrifuge after first thaw to maximize product recovery. Aliquot to avoid repeated freeze-thaw cycles. Store aliquots at 4°C for 1-2 weeks.

Safety Notes

The material contains 0.05% sodium azide as preservative. Although the quantity of azide is very small, appropriate care should be taken when handling this material. Avoid skin and eye contact, inhalation, and ingestion.

Figure

1:1000 (1µg/mL) Ab dilution probed against HEK293 cells transfected with HA-tagged protein vector; untransfected (1) and transfected (2)



For *in vitro* research use only. Not for diagnostic or therapeutic use.

