

Anti-GST Tag

Epitope Tag Antibody

Mouse Monoclonal Antibody Clone GST.B6 / G2R

Product Information

Catalog No.:

DIA-1100 (100µg)

Clone:

GST.B6 / G2R

Concentration:

1 mg/ml

Isotype:

Mouse IgG2a

Specificity:

Recognizes native and denatured forms of purified GST or GST fusion proteins

Immunogen:

GST protein

Physical State:

Liquid

Presentation:

In 10mM PBS with 0.05% NaN₃, pH 7.2.

Antibody purified from mouse ascites fluid by Protein A affinity chromatography

Applications:

Dot Blot, ELISA, Immunoprecipitation, Immunohistochemistry, Western blot

Dilutions:

1:500-2000 Immunohistochemistry (IHC)

1:1000-3000 Western Blot (with ECL, incubate 1h at RT)

(Optimal dilutions should be determined by the end user. For best results with other assays (e.g.: Dot, ELISA, IP, etc), please determine optimal working dilution by titration test)

Sensitivity

WB (with ECL): 10-50ng of purified GST or GST fusion proteins.

Storage and Stability

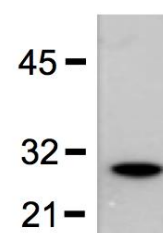
Store at -20°C for up to 2 years. Centrifuge after first thaw to maximize product recovery. Aliquot to avoid repeated freeze-thaw cycles. Store aliquots at 4°C for 1-2 weeks.

Safety Notes

The material contains 0.05% sodium azide as preservative. Although the quantity of azide is very small, appropriate care should be taken when handling this material. Avoid skin and eye contact, inhalation, and ingestion.

Figure

1:5000 (0.2µg/mL) Ab dilution probed against BL-21 bacteria lysate expressing the GST protein



For *in vitro* research use only. Not for diagnostic or therapeutic use.

