

# Anti-V5 Tag

## Epitope Tag Antibody

### Mouse Monoclonal Antibody Clone E10 / V4RR

#### Product Information

**Catalog No.:**

DIA-1200 (100µg)

**Clone:**

E10 / V4RR

**Concentration:**

1 mg/ml

**Isotype:**

Mouse IgG1

**Specificity:**

Recognizes N-terminal, C-terminal or internal HA-tagged fusion proteins

**Immunogen:**

GKPIPNNLLGLDST (V5) synthetic peptide conjugated to KLH

**Physical State:**

Liquid

**Presentation:**

In 10mM PBS with 0.05% NaN<sub>3</sub>, pH 7.2.

Antibody purified from mouse ascites fluid by Protein A affinity chromatography

**Applications:**

Dot Blot, ELISA, Immunoprecipitation, Immunohistochemistry, Western blot

**Dilutions:**

1:500-2000 Immunohistochemistry (IHC)

1:1000-3000 Western Blot (with ECL, incubate 1h at RT)

(Optimal dilutions should be determined by the end user. For best results with other assays (e.g.: Dot, ELISA, IP, etc), please determine optimal working dilution by titration test)

**Sensitivity**

WB (with ECL): 1-2ng of V5-tagged fusion proteins

**Storage and Stability**

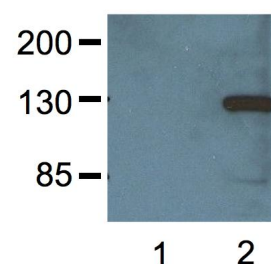
Store at -20°C for up to 2 years. Centrifuge after first thaw to maximize product recovery. Aliquot to avoid repeated freeze-thaw cycles. Store aliquots at 4°C for 1-2 weeks.

**Safety Notes**

The material contains 0.05% sodium azide as preservative. Although the quantity of azide is very small, appropriate care should be taken when handling this material. Avoid skin and eye contact, inhalation, and ingestion.

**Figure**

1:000 (1µg/mL) Ab dilution probed against HEK293 cells transfected with V5-tagged protein vector; untransfected (1) and transfected (2)



**For *in vitro* research use only. Not for diagnostic or therapeutic use.**

