

# Anti-RFP Tag Epitope Tag Antibody Mouse Monoclonal Antibody Clone RF5R

## Product Information

**Catalog No.:**

DIA-1600 (100µg)

**Clone:**

RF5R

**Concentration:**

1 mg/ml

**Isotype:**

Mouse IgG1

**Specificity:**

Recognizes native and denatured forms of RFP (Red Fluorescent Protein) and its variants: tag-RFP, turbo-RFP, DeRed, mCherry, mOrange, etc

**Immunogen:**

RFP (Red Fluorescent Protein) from the *Discosoma* sea anemone N-terminal peptide-KLH conjugates

**Physical State:**

Liquid

**Presentation:**

In 10mM PBS with 0.05% NaN<sub>3</sub>, pH 7.2.  
Antibody purified from mouse ascites fluid by Protein A affinity chromatography

**Applications:**

Dot Blot, ELISA, Immunoprecipitation, Immunohistochemistry, Western blot

**Dilutions:**

1:500-2000 Immunohistochemistry (IHC)  
1:1000--3000 Western Blot (with ECL, incubate 1h at RT)  
(Optimal dilutions should be determined by the end user. For best results with other assays (e.g.: Dot, ELISA, IP, etc), please determine optimal working dilution by titration test)

**Sensitivity**

WB (with ECL): 1-10ng of purified RFP or RFP fusion Proteins

**Storage and Stability**

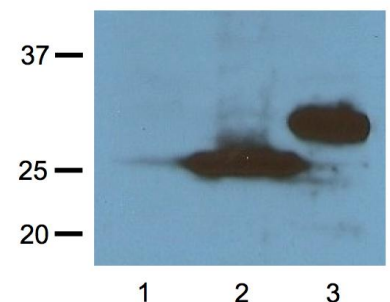
Store at -20°C for up to 2 years. Centrifuge after first thaw to maximize product recovery. Aliquot to avoid repeated freeze-thaw cycles. Store aliquots at 4°C for 1-2 weeks.

**Safety Notes**

The material contains 0.05% sodium azide as preservative. Although the quantity of azide is very small, appropriate care should be taken when handling this material. Avoid skin and eye contact, inhalation, and ingestion.

**Figure**

1:1000 (1µg/mL) Ab dilution probed against HEK293 cells transfected with RFP-tagged protein vector; untransfected control (1), transfected with Turbo-RFP (2), and transfected with DeRed (3)



**For *in vitro* research use only. Not for diagnostic or therapeutic use.**

