

Beratung und Vertrieb Fon + 49 (0) 40 45 067 0

Fax + 49 (0) 40 450 67 490

info@dianova.de

Warburgstr. 45 • 20354 Hamburg www.dianova.de

**Product:** Rabbit Monoclonal Antibody

Biotin Anti-Mouse IgG1 Rabbit Monoclonal Antibody,  
Clone RM106

**Catalog No.:** 31-1002-02

**Lot No.:**

**Clone** RM106

**Specificity** This antibody reacts to the Fc region of mouse IgG1. No cross reactivity with mouse IgG2a, IgG3, IgM, IgA, IgE, human IgG, or rat IgG. It may slightly cross react to mouse IgG2b, and may also react to goat IgG.

The Fc region of RM106 has been engineered to eliminate Fc receptor binding.

**Application:** ELISA, Flow Cytometry, Immunocytochemistry, Immunohistochemistry, Immunoprecipitation, Western Blot.

**Immunogen:** Mouse IgG

**Purity:** Protein A affinity purified from an animal origin-free and protein-free culture supernatant

**Size:** 50 µg

**Concentration:** 1.0 mg/mL

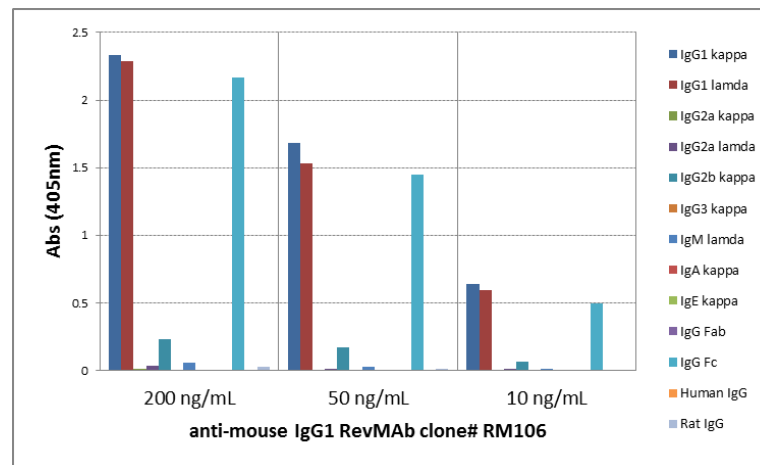
**Buffer:** 50% Glycerol/PBS with 1% BSA and 0.09% sodium azide

**Usage:** ELISA: 0.005µg/mL – 0.2µg/mL;  
ICC, IHC: 0.5µg/mL – 2µg/mL;  
WB: 0.1µg/mL – 0.5µg/mL

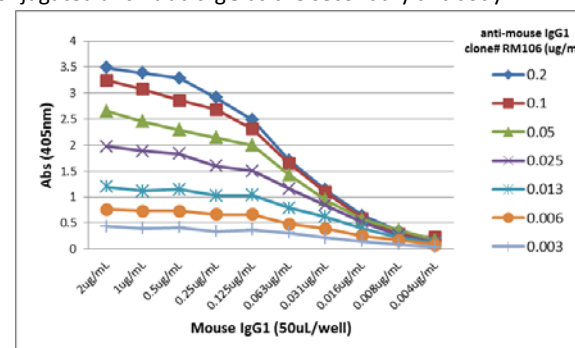
**Storage and Stability:** Stable for 1 Year at -20.0°C from date of receipt.

**Country of Origin:** U.S.A.

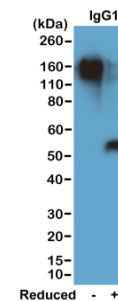
**Intended Use:** For Research Use Only Not for Diagnostic or Therapeutic Use



ELISA of mouse immunoglobulins shows RM106 reacts to the Fc region of mouse IgG1; slightly cross reacts to IgG2b; no cross reactivity with IgG2a, IgG3, IgM, IgA, IgE, human IgG, or rat IgG. The plate was coated with 50 ng/well of different immunoglobulins. 200 ng/mL, 50 ng/mL, or 10 ng/mL of RM106 was used as the primary antibody. An alkaline phosphatase conjugated anti-rabbit IgG as the secondary antibody.



A titer ELISA of mouse IgG1. The plate was coated with different amount of mouse IgG1. A serial dilution of RM106 was used as the primary antibody. An alkaline phosphatase conjugated anti-rabbit IgG as the secondary antibody.



Western blot of nonreduced(-) and reduced(+) mouse IgG1 (20ng/lane), using 0.2µg/mL of RevMAb clone RM106. This antibody reacts to nonreduced IgG1 (~150 kDa) stronger than the reduced  $\gamma$ 1 form (~50 kDa).