

Beratung und Vertrieb Fon + 49 (0) 40 45 067 0
 Fax + 49 (0) 40 450 67 490
 info@dianova.de
 Warburgstr. 45 • 20354 Hamburg www.dianova.de

Product: Rabbit Monoclonal Antibody
 Biotin Anti-Mouse IgG2aκ Rabbit Monoclonal Antibody,
 Clone RM107

Catalog No.: 31-1003-02

Lot No.:

Clone RM107

Specificity This antibody reacts to the Fab region of mouse IgG2aκ. No cross reactivity with mouse IgG2aλ, IgG1, IgG3, IgM, IgA, IgE, human IgG, rat IgG, or goat IgG.

The Fc region of RM107 has been engineered to eliminate Fc receptor binding.

Application: ELISA, Flow Cytometry, Immunocytochemistry, Immunohistochemistry, Immunoprecipitation, Western Blot (nonreduced only).

Immunogen: Mouse IgG

Purity: Protein A affinity purified from an animal origin-free and protein-free culture supernatant

Size: 50 µg

Concentration: 1.0 mg/mL

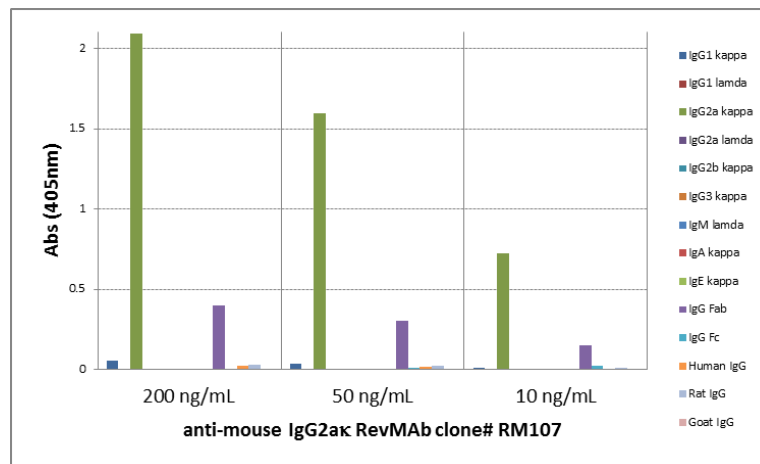
Buffer: 50% Glycerol/PBS with 1% BSA and 0.09% sodium azide

Usage: ELISA: 0.005µg/mL – 0.2µg/mL;
 ICC, IHC: 0.5µg/mL – 2µg/mL;
 WB: 0.1µg/mL – 0.5µg/mL

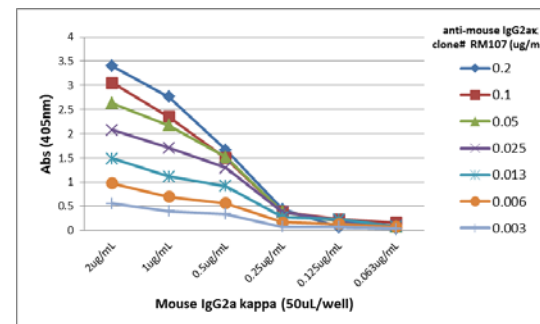
Storage and Stability: Stable for 1 Year at -20.0°C from date of receipt.

Country of Origin: U.S.A.

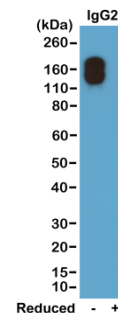
Intended Use: For Research Use Only Not for Diagnostic or Therapeutic Use



ELISA of mouse immunoglobulins shows RM107 reacts to the Fab region of mouse IgG2aκ; no cross reactivity with IgG2aλ, IgG1, IgG3, IgM, IgA, IgE, human IgG, rat IgG, or goat IgG. The plate was coated with 50 ng/well of different immunoglobulins. 200 ng/mL, 50 ng/mL, or 10 ng/mL of RM107 was used as the primary antibody. An alkaline phosphatase conjugated anti-rabbit IgG as the secondary antibody.



A titer ELISA of mouse IgG2aκ. The plate was coated with different amounts of mouse IgG2aκ. A serial dilution of RM107 was used as the primary antibody. An alkaline phosphatase conjugated anti-rabbit IgG as the secondary antibody.



Western blot of nonreduced(-) and reduced(+) mouse IgG2aκ (20 ng/lane), using 0.2µg/mL of RevMAb clone RM107. This antibody only reacts to nonreduced Mouse IgG2aκ.