

Beratung und Vertrieb

Fon + 49 (0) 40 45 067 0

dianova

Fax + 49 (0) 40 450 67 490

info@dianova.de

Warburgstr. 45 • 20354 Hamburg

www.dianova.de

Product: Rabbit Monoclonal Antibody

Biotin Anti-Mouse IgG2b Rabbit Monoclonal Antibody,
Clone RM108

Catalog No.: 31-1004-02

Lot No.:

Clone RM108

Specificity This antibody reacts to the Fc region of mouse IgG2b. No cross reactivity with mouse IgG1, IgG2a, IgG3, IgM, IgA, IgE, human IgG, rat IgG, or goat IgG.

The Fc region of RM108 has been engineered to eliminate Fc receptor binding.

Application: ELISA, Flow Cytometry, Immunocytochemistry, Immunohistochemistry, Immunoprecipitation, Western Blot (stronger on nonreduced).

Immunogen: Mouse IgG2b

Purity: Protein A affinity purified from an animal origin-free and protein-free culture supernatant

Size: 50 µg

Concentration: 1.0 mg/mL

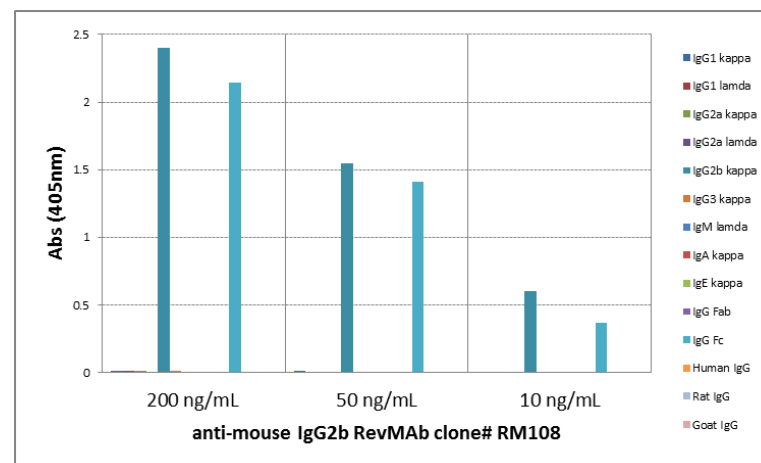
Buffer: 50% Glycerol/PBS with 1% BSA and 0.09% sodium azide

Usage: ELISA: 0.005µg/mL – 0.2µg/mL;
ICC, IHC: 0.5µg/mL – 2µg/mL;
WB: 0.1µg/mL – 0.5µg/mL

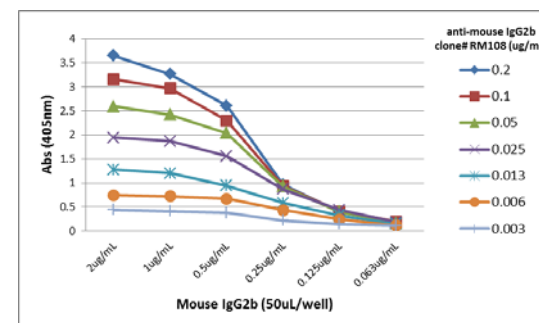
Storage and Stability: Stable for 1 Year at -20.0°C from date of receipt.

Country of Origin: U.S.A.

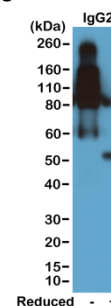
Intended Use: For Research Use Only Not for Diagnostic or Therapeutic Use



ELISA of mouse immunoglobulins shows RM108 reacts to the Fc region of mouse IgG2b; no cross reactivity with IgG1, IgG2a, IgG3, IgM, IgA, IgE, human IgG, rat IgG, or goat IgG. The plate was coated with 50 ng/well of different immunoglobulins. 200 ng/mL, 50 ng/mL, or 10 ng/mL of RM108 was used as the primary antibody. An alkaline phosphatase conjugated anti-rabbit IgG as the secondary antibody.



A titer ELISA of mouse IgG2b. The plate was coated with different amounts of mouse IgG2b. A serial dilution of RM108 was used as the primary antibody. An alkaline phosphatase conjugated anti-rabbit IgG as the secondary antibody.



Western blot of nonreduced(-) and reduced(+) mouse IgG2b (20ng/lane), using 0.2µg/mL of RevMAb clone RM108. This antibody reacts to nonreduced IgG2b (~150 kDa) much stronger than the reduced γ2b form (~50 kDa).