

Beratung und Vertrieb

Fon + 49 (0) 40 45 067 0

dianova

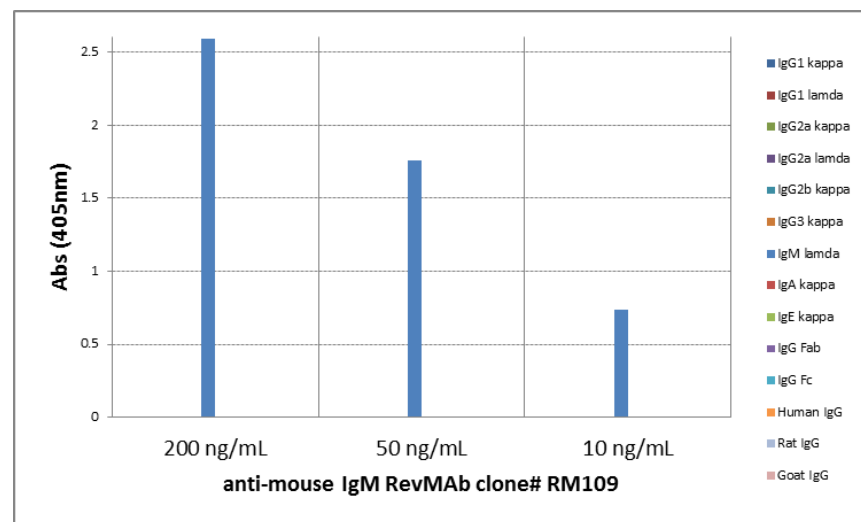
Fax + 49 (0) 40 450 67 490

info@dianova.de

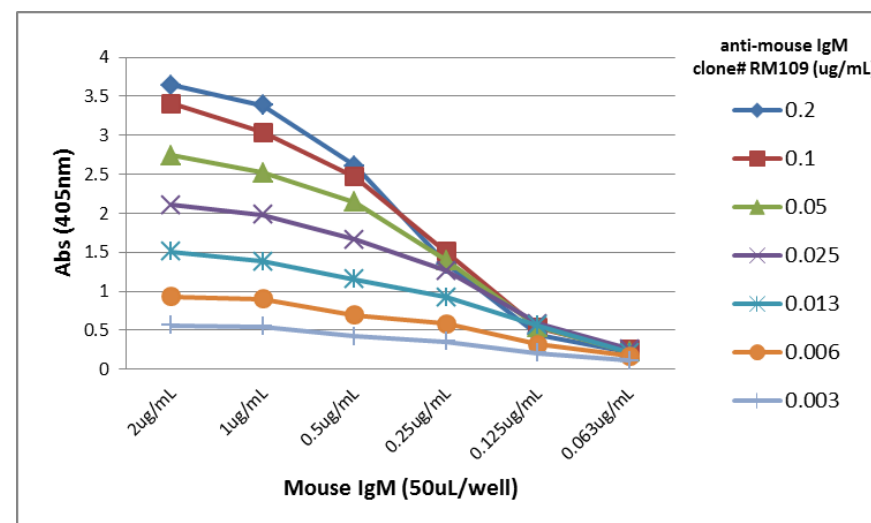
Warburgstr. 45 • 20354 Hamburg

www.dianova.de

Product:	Rabbit Monoclonal Antibody Biotin Anti-Mouse IgM Rabbit Monoclonal Antibody, Clone RM109
Catalog No.:	31-1005-02
Lot No.:	
Clone	RM109
Specificity	This antibody reacts to mouse IgM. No cross reactivity with mouse IgG1, IgG2a, IgG2b, IgG3, IgA, IgE, human IgG, rat IgG, or goat IgG. The Fc region of RM109 has been engineered to eliminate Fc receptor binding.
Application:	ELISA, Flow Cytometry, Immunocytochemistry, Immunohistochemistry, Immunoprecipitation.
Immunogen:	Mouse IgM
Purity:	Protein A affinity purified from an animal origin-free and protein-free culture supernatant
Size:	50 µg
Concentration:	1.0 mg/mL
Buffer:	50% Glycerol/PBS with 1% BSA and 0.09% sodium azide
Usage:	ELISA: 0.005µg/mL – 0.2µg/mL; ICC, IHC: 0.5µg/mL – 2µg/mL;
Storage and Stability:	Stable for 1 Year at -20.0°C from date of receipt.
Country of Origin:	U.S.A.
Intended Use:	For Research Use Only Not for Diagnostic or Therapeutic Use



ELISA of mouse immunoglobulins shows RM109 reacts to mouse IgM; no cross reactivity with IgG1, IgG2a, IgG2b, IgG3, IgA, IgE, human IgG, rat IgG, or goat IgG. The plate was coated with 50 ng/well of different immunoglobulins. 200 ng/mL, 50 ng/mL, or 10 ng/mL of RM109 was used as the primary antibody. An alkaline phosphatase conjugated anti-rabbit IgG as the secondary antibody.



A titer ELISA of mouse IgM. The plate was coated with different amounts of mouse IgM. A serial dilution of RM109 was used as the primary antibody. An alkaline phosphatase conjugated anti-rabbit IgG as the secondary antibody.