

Beratung und Vertrieb

Fon + 49 (0) 40 45 067 0

dianova

Fax + 49 (0) 40 450 67 490

info@dianova.de

Warburgstr. 45 • 20354 Hamburg

www.dianova.de

Product: Rabbit Monoclonal Antibody
Biotin Anti-Mouse Immunoglobulin Kappa Light Chain Rabbit Monoclonal Antibody, Clone RM103

Catalog No.: 31-1007-02

Lot No.:

Clone RM103

Specificity This antibody reacts to the kappa light chain of mouse immunoglobulins. No cross reactivity with the lamda light chain, human IgG, rat IgG, or goat IgG.

The Fc region of RM103 has been engineered to eliminate Fc receptor binding.

Application: ELISA, Flow Cytometry, Immunocytochemistry, Immunohistochemistry, Immunoprecipitation, Western Blot (nonreduced).

Immunogen: Mouse IgG

Purity: Protein A affinity purified from an animal origin-free and protein-free culture supernatant

Size: 50 µg

Concentration: 1.0 mg/mL

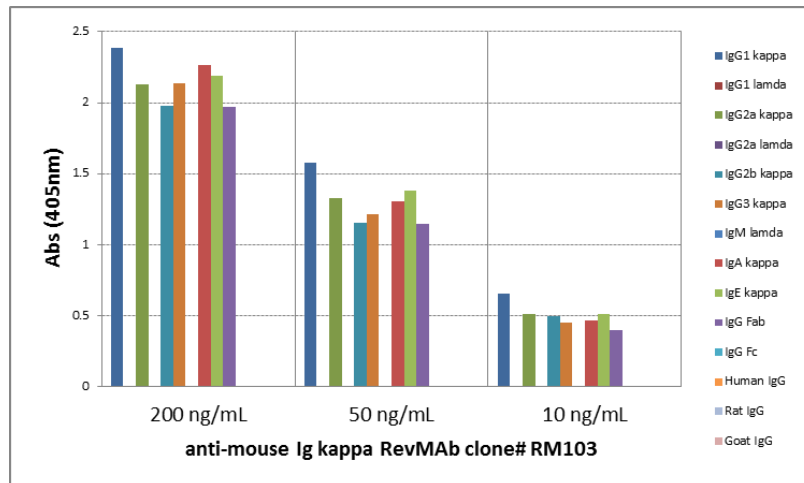
Buffer: 50% Glycerol/PBS with 1% BSA and 0.09% sodium azide

Usage: ELISA: 0.005µg/mL – 0.2µg/mL;
ICC, IHC: 0.5µg/mL – 2µg/mL;
WB: 0.1µg/mL – 0.5µg/mL

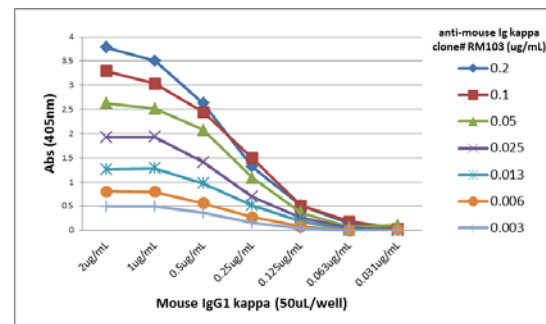
Storage and Stability: Stable for 1 Year at -20.0°C from date of receipt.

Country of Origin: U.S.A.

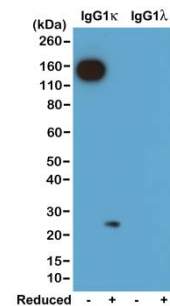
Intended Use: For Research Use Only Not for Diagnostic or Therapeutic Use



ELISA of mouse immunoglobulins shows RM103 reacts to the kappa light chain of mouse immunoglobulins. No cross reactivity with the lamda light chain, human IgG, rat IgG, or goat IgG. The plate was coated with 50 ng/well of different immunoglobulins. 200 ng/mL, 50 ng/mL, or 10 ng/mL of RM103 was used as the primary antibody. An alkaline phosphatase conjugated anti-rabbit IgG as the secondary antibody.



A titer ELISA of mouse IgG1κ. The plate was coated with different amounts of mouse IgG1κ. A serial dilution of RM103 was used as the primary antibody. An alkaline phosphatase conjugated anti-rabbit IgG as the secondary antibody.



Western blot of nonreduced(-) and reduced(+) mouse IgG1κ and IgG1λ (20ng/lane), using 0.2µg/mL of RevMAB clone RM103. This antibody reacts to nonreduced IgG1κ (~150 kDa), and slightly reacts to reduced κ light chain (~25 kDa).