

Beratung und Vertrieb Fon + 49 (0) 40 45 067 0

**dianova**

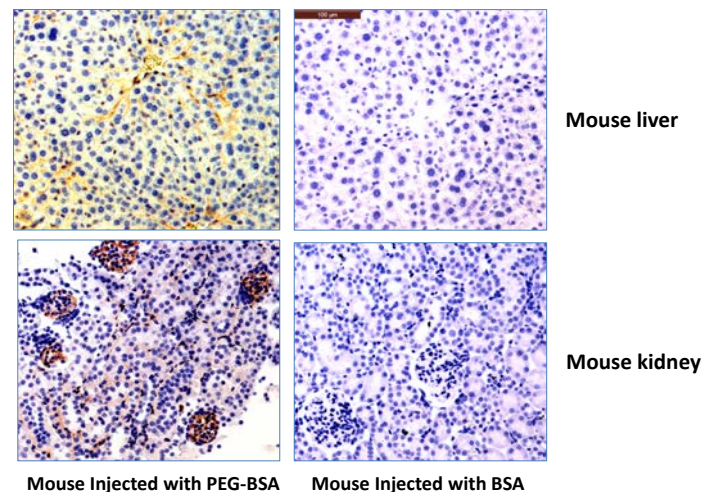
Warburgstr. 45 • 20354 Hamburg

Fax + 49 (0) 40 450 67 490

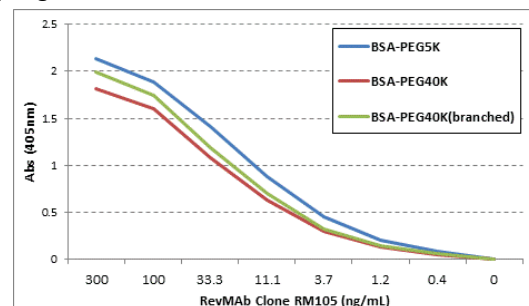
info@dianova.de

www.dianova.de

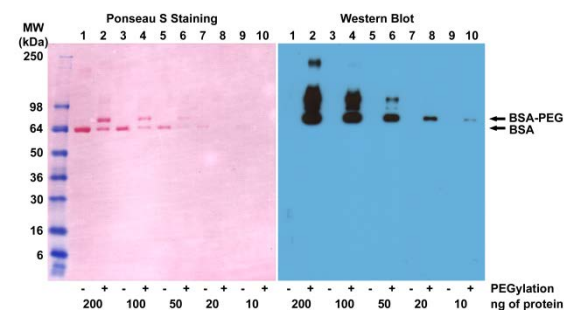
<b>Product:</b>	Rabbit Monoclonal Antibody
	Biotin Anti-PEG (methoxy group) Rabbit Monoclonal Antibody, Clone RM105
<b>Catalog No.:</b>	31-1008-02
<b>Lot No.:</b>	
<b>Clone</b>	RM105
<b>Specificity</b>	This antibody reacts to the methoxy group of Polyethylene glycol (PEG). It is specific for methoxypolyethylene glycol.
<b>Application:</b>	ELISA, Immunohistochemistry, Immunocytochemistry, Western Blot, Immunoprecipitation, Flow Cytometry,
<b>Immunogen:</b>	KLH-PEG with terminal methoxy group
<b>Purity:</b>	Protein A affinity purified from an animal origin-free and protein-free culture supernatant
<b>Size:</b>	50 µg
<b>Concentration:</b>	1.0 mg/mL
<b>Buffer:</b>	50% Glycerol/PBS with 1% BSA and 0.09% sodium azide
<b>Usage:</b>	ELISA: 0.01µg/mL – 0.3µg/mL IHC: 0.5µg/mL – 2µg/mL WB: 0.1µg/mL – 1µg/mL
<b>Storage and Stability:</b>	Stable for 1 Year at -20.0°C from date of receipt.
<b>Country of Origin:</b>	U.S.A.
<b>Intended Use:</b>	<b>For Research Use Only Not for Diagnostic or Therapeutic Use</b>



Immunohistochemistry of mouse liver and kidney using 0.5µg/mL of RevMAB anti-PEG Clone RM105. The mouse was injected with PEG-BSA or BSA for 3 hours before sampling.



ELISA of three different PEGylated BSAs using anti-PEG RevMAB clone RM105, followed by an AP conjugated goat anti-rabbit IgG.



Western blot of BSA and PEGylated BSA (mPEG 5 kDa) using 0.1µg/mL of anti-PEG RevMAB clone RM105.