

Beratung und Vertrieb Fon + 49 (0) 40 45 067 0
 Fax + 49 (0) 40 450 67 490
 info@dianova.de
 www.dianova.de

dianova

Warburgstr. 45 • 20354 Hamburg

Product: Rabbit Monoclonal Antibody
 Biotin Anti- α -Tubulin Rabbit Monoclonal Antibody
 Clone RM113

Catalog No.: 31-1016-02

Lot No.:

Clone RM113

Specificity This antibody reacts to α -Tubulin, including Tubulin alpha-1A chain and Tubulin alpha-1B chain.

Application: Western Blot, Immunoprecipitation, Immunocytochemistry, Immunohistochemistry, Flow Cytometry, ELISA

Immunogen: A peptide corresponding to the C-terminus of α -Tubulin

Purity: Protein A affinity purified from an animal origin-free culture supernatant

Size: 50 μ L

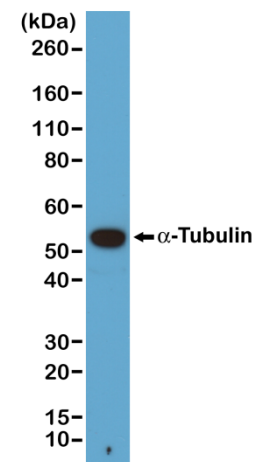
Buffer: 50% Glycerol/PBS with 1% BSA and 0.09% sodium azide

Usage: WB: 1:1000 dilution;
 IP, ChIP: 1:200 dilution;
 ICC, IHC: 1:200 dilution.

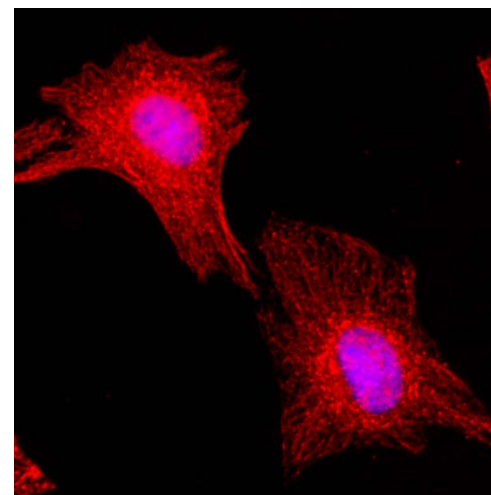
Storage and Stability: Stable for 1 Year at -20.0°C from date of receipt.

Country of Origin: U.S.A.

Intended Use: For Research Use Only Not for Diagnostic or Therapeutic Use



Western blot of A431 cells, using anti- α -Tubulin RevMAB Clone RM113 at 1/1000 dilution, showed a band of α -Tubulin at the predicted MW (~50 kDa).



Immunocytochemical staining of HeLa cells, using Anti- α -Tubulin RevMAB Clone RM113 at 1/200 dilution (red). Nuclei have been labeled with DAPI (blue).