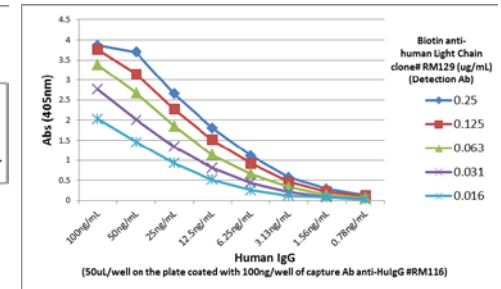
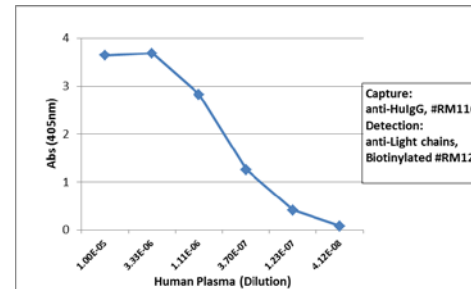
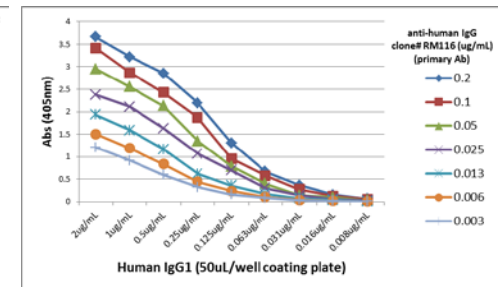
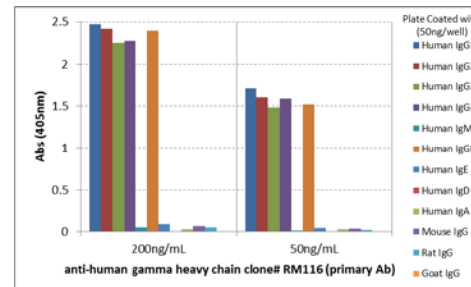


## Certificate of Analysis

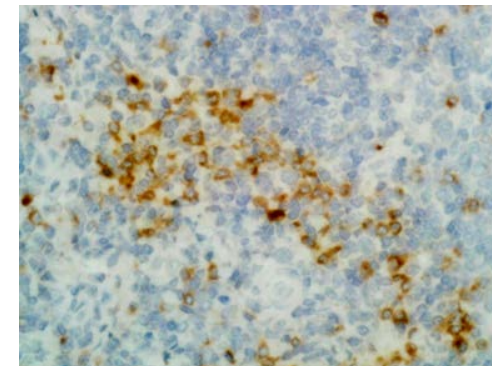
<b>Product:</b>	Rabbit Monoclonal Antibody Anti-Human Gamma Heavy Chain Rabbit Monoclonal Antibody, Clone RM116
<b>Catalog No.:</b>	31-1018-00
<b>Lot No.:</b>	
<b>Clone</b>	RM116
<b>Specificity</b>	This antibody reacts to the Fc region of all gamma heavy chains of human immunoglobulins, including $\gamma 1$ , $\gamma 2$ , $\gamma 3$ , and $\gamma 4$ . No cross reactivity with human IgM, IgA, IgD, IgE, mouse IgG, rat IgG, or goat IgG.
<b>Application:</b>	ELISA, Immunohistochemistry, Immunocytochemistry, Flow Cytometry.
<b>Immunogen:</b>	Human IgG
<b>Purity:</b>	Protein A affinity purified from an animal origin-free culture supernatant
<b>Size:</b>	100 $\mu$ g
<b>Concentration:</b>	1.0 mg/mL
<b>Buffer:</b>	50% Glycerol/PBS with 1% BSA and 0.09% sodium azide
<b>Usage:</b>	ELISA: 50ng/well – 200ng/well (for Capture); 0.05ug/mL – 0.2ug/mL (for Detection); IHC, ICC: 0.5ug/mL – 2ug/mL.
<b>Storage and Stability:</b>	Stable for 1 Year at -20.0°C from date of receipt.
<b>Country of Origin:</b>	U.S.A.
<b>Intended Use:</b>	<b>For Research Use Only Not for Diagnostic or Therapeutic Use</b>



Sandwich ELISA using RM116 as the capture antibody (100ng/well), and Biotinylated anti-human light chains ( $\kappa + \lambda$ ) antibody RM129 as the detection antibody, followed by an alkaline phosphatase conjugated streptavidin.



Antigen coated ELISA using RM116 as the primary antibody. An alkaline phosphatase conjugated anti-rabbit IgG as the secondary antibody.



Immunohistochemistry of Human Tonsil using Anti-Gamma Heavy Chain antibody RM116.