

Beratung und Vertrieb Fon + 49 (0) 40 45 067 0

dianova Fax + 49 (0) 40 450 67 490
info@dianova.de

Waburgstr. 45 • 20354 Hamburg www.dianova.de

Product: Rabbit Monoclonal Antibody

Biotin Anti-Human Gamma Heavy Chain Rabbit
Monoclonal Antibody, Clone RM116

Catalog No.: 31-1018-02

Lot No.:

Clone RM116

Specificity This antibody reacts to the Fc region of all gamma heavy chains of human immunoglobulins, including $\gamma 1$, $\gamma 2$, $\gamma 3$, and $\gamma 4$. No cross reactivity with other human heavy chains, mouse IgG, rat IgG, or goat IgG.

Application: ELISA, Immunohistochemistry, Immunocytochemistry, Flow Cytometry.

Immunogen: Human IgG

Purity: Protein A affinity purified from an animal origin-free culture supernatant

Size: 50 μ g

Concentration: 1.0 mg/mL

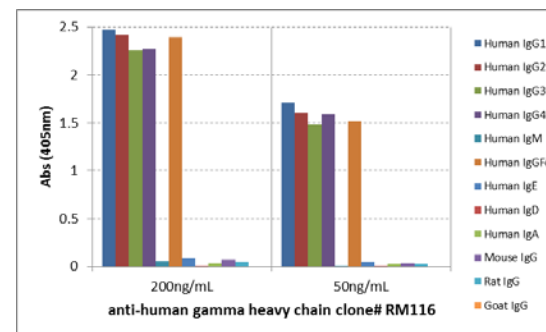
Buffer: 50% Glycerol/PBS with 1% BSA and 0.09% sodium azide

Usage: ELISA: 0.05ug/mL – 0.2ug/mL;
IHC, ICC: 0.5ug/mL – 2ug/mL.

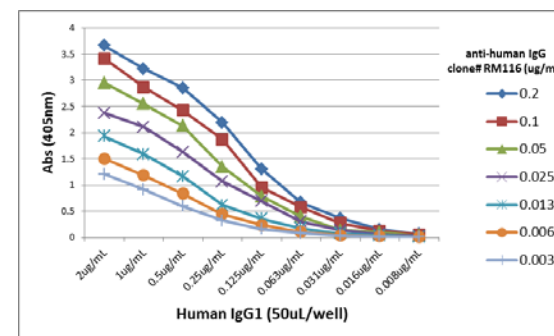
Storage and Stability: Stable for 1 Year at -20.0°C from date of receipt.

Country of Origin: U.S.A.

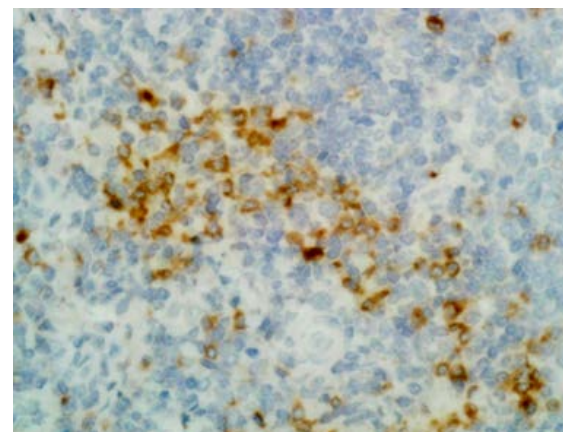
Intended Use: For Research Use Only Not for Diagnostic or Therapeutic Use



ELISA of human immunoglobulins shows RM116 reacts to the $\gamma 1$, $\gamma 2$, $\gamma 3$, $\gamma 4$ heavy chains of human IgGs, and the Fc of human IgG. No cross reactivity with other human heavy chains, mouse IgG, rat IgG, or goat IgG. The plate was coated with 50 ng/well of different immunoglobulins. 200 ng/mL or 50 ng/mL of RM116 was used as the primary antibody. An alkaline phosphatase conjugated anti-rabbit IgG as the secondary antibody.



A titer ELISA using RM116. The plate was coated with different amounts of human IgG1. A serial dilution of RM116 was used as the primary antibody. An alkaline phosphatase conjugated anti-rabbit IgG as the secondary antibody.



Immunohistochemistry of Human Tonsil using Anti-Gamma Heavy Chain antibody RM116.