

Beratung und Vertrieb

Fon + 49 (0) 40 45 067 0

dianova

Fax + 49 (0) 40 450 67 490

info@dianova.de

Warburgstr. 45 • 20354 Hamburg

www.dianova.de

Product: Rabbit Monoclonal Antibody
Biotin Anti-Human IgG3 Rabbit Monoclonal Antibody,
Clone RM119

Catalog No.: 31-1021-02

Lot No.:

Clone RM119

Specificity This antibody reacts to the heavy chain of human IgG3. No cross reactivity with human IgG1, IgG2, IgG4, IgM, IgA, IgD, IgE, mouse IgG, rat IgG, or goat IgG.

Application: ELISA, Immunohistochemistry, Immunocytochemistry, Flow Cytometry.

Immunogen: Human IgG3

Purity: Protein A affinity purified from an animal origin-free culture supernatant

Size: 50 µg

Concentration: 1.0 mg/mL

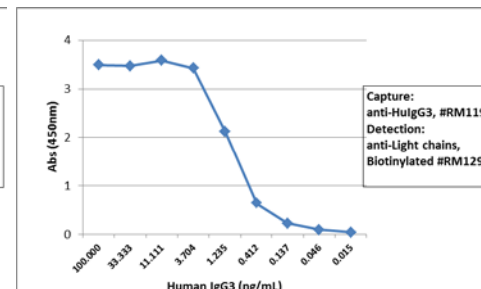
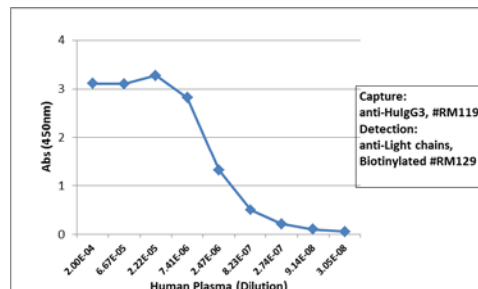
Buffer: 50% Glycerol/PBS with 1% BSA and 0.09% sodium azide

Usage: ELISA: 50ng/well – 200ng/well (for Capture);
0.05ug/mL – 0.2ug/mL (for Detection);
IHC, ICC: 2ug/mL – 5ug/mL;

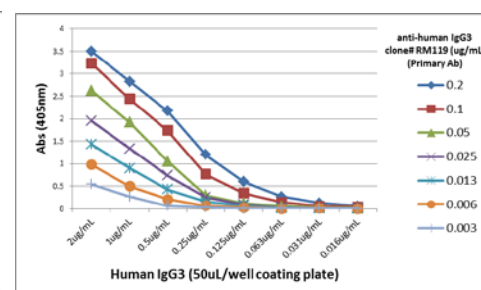
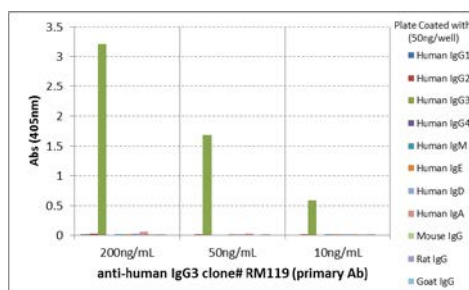
Storage and Stability: Stable for 1 Year at -20.0°C from date of receipt.

Country of Origin: U.S.A.

Intended Use: For Research Use Only Not for Diagnostic or Therapeutic Use

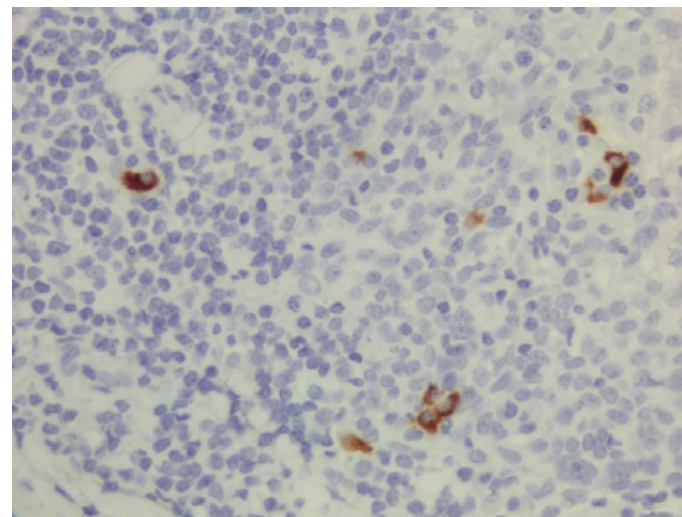


Sandwich ELISA using RM119 as the capture antibody (100ng/well), and Biotinylated anti-human light chains (κ+λ) antibody RM129 as the detection antibody, followed by a HRP conjugated streptavidin.



ELISA of human immunoglobulins shows RM119 only reacts to human IgG3. No cross reactivity with other human immunoglobulins, mouse, rat, or goat IgG.

A titer ELISA using RM119. The plate was coated with different amounts of human IgG3. A serial dilution of RM119 was used as the primary antibody.



Immunohistochemistry of Human Lymphoid Tissue using Anti-Human IgG3 antibody RM119.