

Certificate of Analysis

Product:	Rabbit Monoclonal Antibody Human IgM Matched Antibody Pair
Catalog No.:	31-1023-MK
Lot No.:	
Specificity	This antibody pair detects only human IgM. It does not react to monkey (Cyno or Rhesus) IgM, mouse IgM, rat IgM, or goat IgM.
Application:	Sandwich ELISA, or other Sandwich Assays.
Components:	<ol style="list-style-type: none"> Capture Antibody: Anti-Human IgM Rabbit Monoclonal antibody, clone RM121, 100 µg at 1.0 mg/mL in 50% Glycerol/PBS with 1% BSA and 0.09% sodium azide; Detection Antibody: Biotin Anti-Human Ig Light Chain Rabbit Monoclonal Antibody, Clone RM129, 25 µg at 1.0 mg/mL in 50% Glycerol/PBS with 1% BSA and 0.09% sodium azide; 10X Sample Diluent: Added to the tested sample to reduce non-specific background and noise.
Usage:	ELISA: Capture Antibody 50ng/well – 200ng/well; Detection Antibody 0.1µg/mL – 0.5µg/mL;
Storage and Stability:	Components (1) (2) Stable for 1 Year at -20.0°C from date of receipt. Component (3) Store at 2-8°C
Country of Origin:	U.S.A.
Intended Use:	For Research Use Only Not for Diagnostic or Therapeutic Use

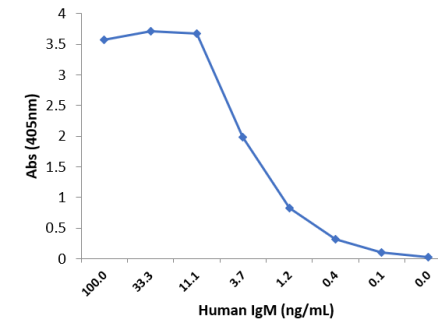


Fig 1. Sandwich ELISA using RM121 as the capture antibody (100ng/well), and Biotinylated anti-human light chains (k+) antibody RM129 (0.2µg/mL) as the detection antibody, followed by an alkaline phosphatase conjugated streptavidin.

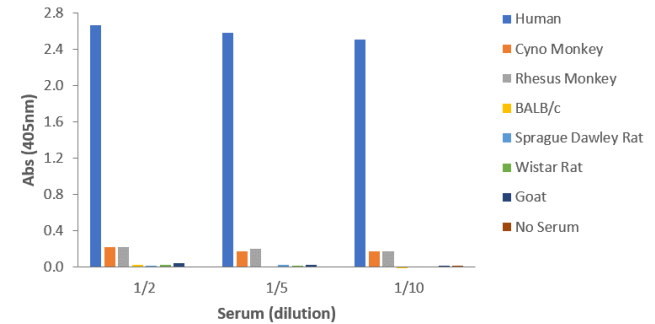


Fig 2. Sandwich ELISA, using RevMAB human IgM matched antibody pair (capture: RM121; detection: Biotin-RM129), shows species reactivity to human IgM only, and shows no cross-reactivity to monkey (Cyno or Rhesus), mouse IgM, rat IgM, or goat

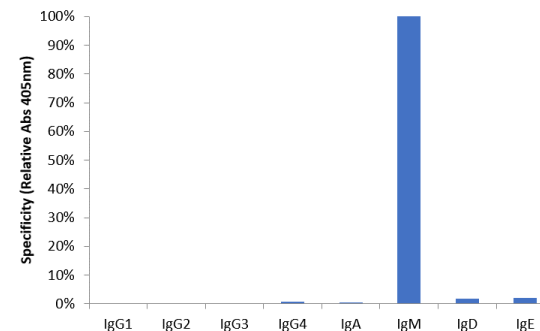


Fig 3. Sandwich ELISA, using RevMAB human IgM matched antibody pair, shows no cross-reactivity with Human IgG, IgE, IgA, or IgD. The plate was coated with human IgM capture antibody (50ng/well). Different immunoglobulin samples (0.2 µg/mL) were added and biotinylated RM129 (0.2µg/mL) was used as detection antibody, followed by an alkaline phosphatase conjugated streptavidin.