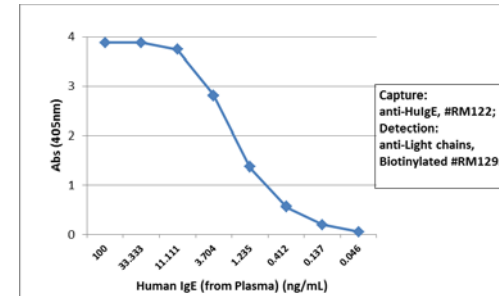
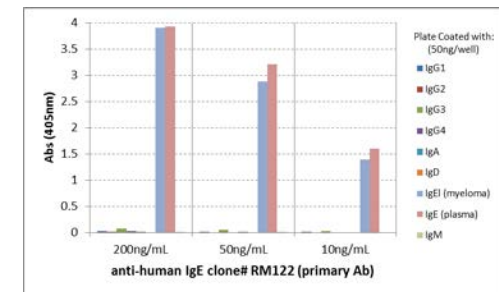


Certificate of Analysis

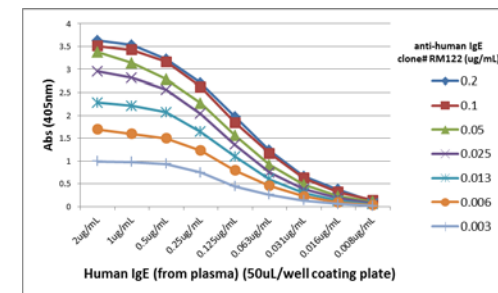
Product:	Rabbit Monoclonal Antibody Anti-Human IgE Rabbit Monoclonal Antibody, Clone RM122
Catalog No.:	31-1024-00
Lot No.:	
Clone	RM122
Specificity	This antibody reacts to human IgE. No cross reactivity with human IgG, IgM, IgD, or IgA.
Application:	ELISA, Immunohistochemistry, Immunocytochemistry, Flow Cytometry.
Immunogen:	Human IgE
Purity:	Protein A affinity purified from an animal origin-free culture supernatant
Size:	100 µg
Concentration:	1.0 mg/mL
Buffer:	50% Glycerol/PBS with 1% BSA and 0.09% sodium azide
Usage:	ELISA: 10ng/well – 100ng/well (for Capture); 0.01µg/mL – 0.1µg/mL (for Detection); IHC, ICC: 0.5µg/mL – 2µg/mL;
Storage and Stability:	Stable for 1 Year at -20.0°C from date of receipt.
Country of Origin:	U.S.A.
Intended Use:	For Research Use Only Not for Diagnostic or Therapeutic Use



Sandwich ELISA using RM122 as the capture antibody (25ng/well), and Biotinylated anti-human light chains (κ+λ) antibody RM129 as the detection antibody, followed by an alkaline phosphatase conjugated streptavidin.



ELISA of human immunoglobulins shows RM122 reacts to both IgEλ from human myeloma and IgE from human plasma. No cross reactivity with human IgG, IgM, IgD, or IgA. The plate was coated with 50 ng/well of different immunoglobulins. 200 ng/mL, 50ng/mL, or 10 ng/mL of RM122 was used as the primary antibody. An alkaline phosphatase conjugated anti-rabbit IgG as the secondary antibody.



A titer ELISA using RM122. The plate was coated with different amounts of human IgE (from plasma). A serial dilution of RM122 was used as the primary antibody. An alkaline phosphatase conjugated anti-rabbit IgG as the secondary antibody.