

Beratung und Vertrieb

Fon + 49 (0) 40 45 067 0

**dianova**

Fax + 49 (0) 40 450 67 490

info@dianova.de

Warburgstr. 45 • 20354 Hamburg

www.dianova.de

**Product:** Rabbit Monoclonal Antibody  
Biotin Anti-Human IgA2 Rabbit Monoclonal Antibody,  
Clone RM125

**Catalog No.:** 31-1027-02

**Lot No.:**

**Clone** RM125

**Specificity** This antibody reacts to human IgA2. No cross reactivity with human IgA1, IgG, IgM, IgD, or IgE.

**Application:** ELISA, Immunohistochemistry, Immunocytochemistry, Flow Cytometry.

**Immunogen:** Human IgA2

**Purity:** Protein A affinity purified from an animal origin-free culture supernatant

**Size:** 50 µg

**Concentration:** 1.0 mg/mL

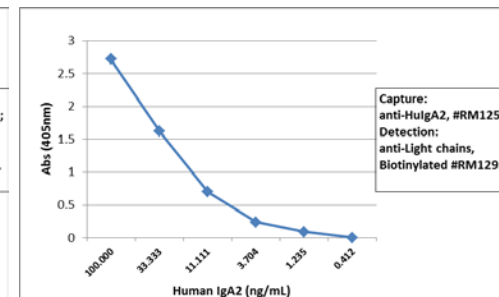
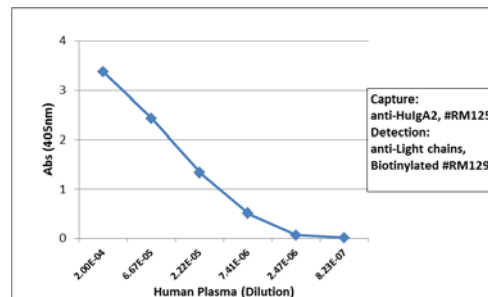
**Buffer:** 50% Glycerol/PBS with 1% BSA and 0.09% sodium azide

**Usage:** ELISA: 50ng/well – 200ng/well (for Capture);  
0.05ug/mL – 0.2ug/mL (for Detection);  
ICC: 0.5ug/mL-2ug/mL;  
IHC: 0.1ug/mL – 1ug/mL

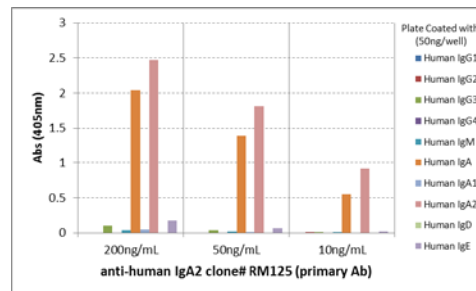
**Storage and Stability:** Stable for 1 Year at -20.0°C from date of receipt.

**Country of Origin:** U.S.A.

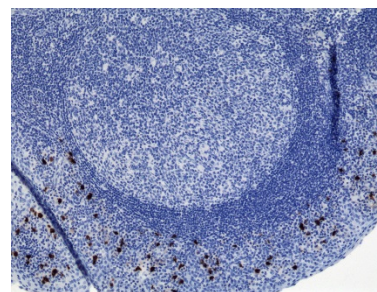
**Intended Use:** For Research Use Only Not for Diagnostic or Therapeutic Use



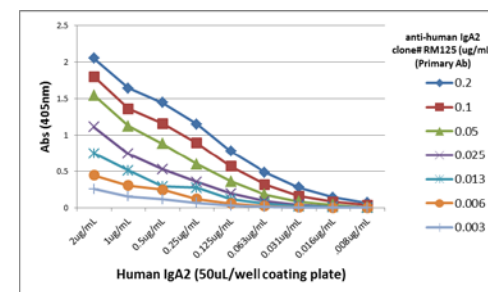
Sandwich ELISA using RM125 as the capture antibody (100ng/well), and Biotinylated anti-human light chains (κ+λ) antibody RM129 as the detection antibody, followed by an alkaline phosphatase conjugated streptavidin.



ELISA of human immunoglobulins shows RM125 only reacts to human IgA2. No cross reactivity with human IgA1, IgG, IgM, IgD, or IgE. The plate was coated with 50 ng/well of different immunoglobulins. 200 ng/mL, 50ng/mL, or 10 ng/mL of RM125 was used as the primary antibody. An alkaline phosphatase conjugated anti-rabbit IgG as the secondary antibody.



Immunohistochemistry of Human Tonsil Tissue using Anti-Human IgA2 antibody RM125.



A titer ELISA using RM125. The plate was coated with different amounts of human IgA2. A serial dilution of RM125 was used as the primary antibody. An alkaline phosphatase conjugated anti-rabbit IgG as the secondary antibody.