

Beratung und Vertrieb

Fon + 49 (0) 40 45 067 0

dianova

Fax + 49 (0) 40 450 67 490

info@dianova.de

Warburgstr. 45 • 20354 Hamburg

www.dianova.de

**Product:** Rabbit Monoclonal Antibody  
Biotin Anti-Human Kappa Light Chain Rabbit Monoclonal Antibody, Clone RM126

**Catalog No.:** 31-1028-02

**Lot No.:**

**Clone** RM126

**Specificity** This antibody reacts to the kappa light chain of human immunoglobulins. No cross reactivity with the lambda light chain, mouse IgG, rat IgG, or goat IgG.

**Application:** ELISA, Immunohistochemistry, Immunocytochemistry, Flow Cytometry.

**Immunogen:** Human IgG

**Purity:** Protein A affinity purified from an animal origin-free culture supernatant

**Size:** 50 µg

**Concentration:** 1.0 mg/mL

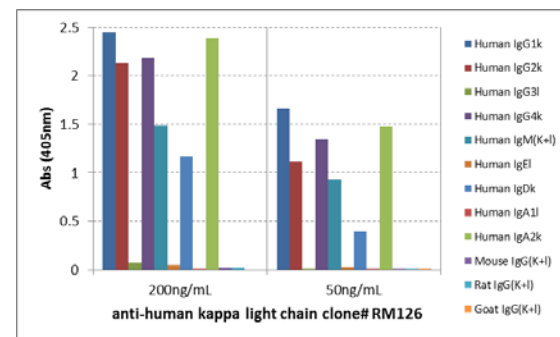
**Buffer:** 50% Glycerol/PBS with 1% BSA and 0.09% sodium azide

**Usage:** ELISA: 0.05ug/mL – 0.2ug/mL;  
IHC, ICC: 0.5ug/mL – 2ug/mL.

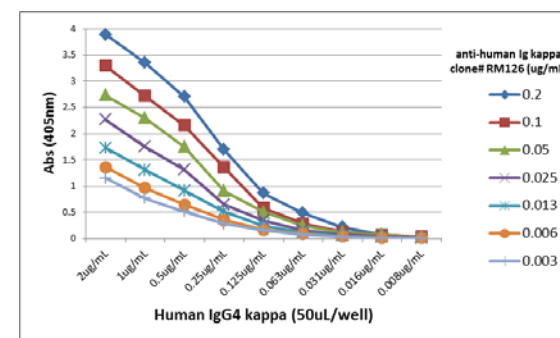
**Storage and Stability:** Stable for 1 Year at -20.0°C from date of receipt.

**Country of Origin:** U.S.A.

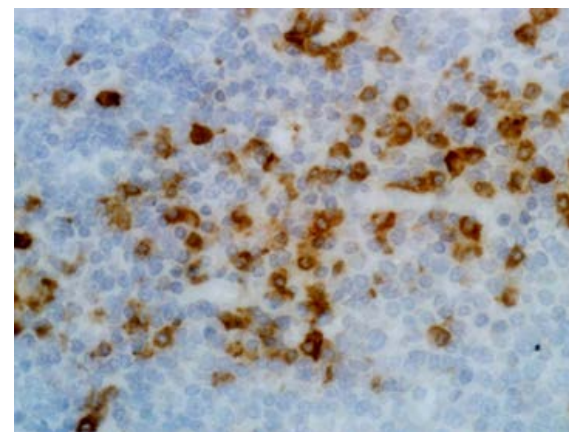
**Intended Use:** For Research Use Only Not for Diagnostic or Therapeutic Use



ELISA of human immunoglobulins shows RM126 reacts to the kappa light chain of human immunoglobulins. No cross reactivity with the lambda light chain, mouse IgG, rat IgG, or goat IgG. The plate was coated with 50 ng/well of different immunoglobulins. 200 ng/mL or 50 ng/mL of RM126 was used as the primary antibody. An alkaline phosphatase conjugated anti-rabbit IgG as the secondary antibody.



A titer ELISA using RM126. The plate was coated with different amounts of human IgG4k. A serial dilution of RM126 was used as the primary antibody. An alkaline phosphatase conjugated anti-rabbit IgG as the secondary antibody.



Immunohistochemistry of human tonsil using anti-kappa light chain antibody RM126.