

Beratung und Vertrieb Fon + 49 (0) 40 45 067 0

dianova

Fax + 49 (0) 40 450 67 490

info@dianova.de

Warburgstr. 45 • 20354 Hamburg

www.dianova.de

Product: Rabbit Monoclonal Antibody
Biotin Anti-Human Lambda Light Chain Rabbit
Monoclonal Antibody, Clone RM127

Catalog No.: 31-1029-02

Lot No.:

Clone RM127

Specificity This antibody reacts to the lambda light chain of human immunoglobulins. No cross reactivity with the kappa light chain, mouse IgG, rat IgG, or goat IgG.

Application: ELISA, Immunohistochemistry, Immunocytochemistry, Flow Cytometry.

Immunogen: Human IgG

Purity: Protein A affinity purified from an animal origin-free culture supernatant

Size: 50 µg

Concentration: 1.0 mg/mL

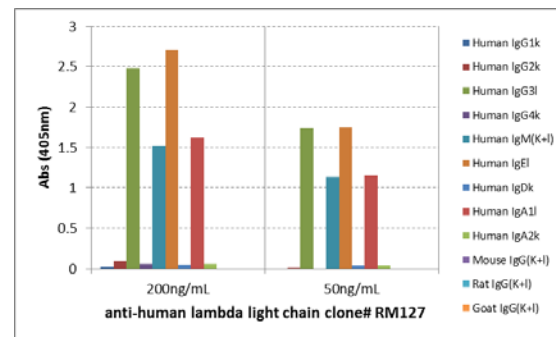
Buffer: 50% Glycerol/PBS with 1% BSA and 0.09% sodium azide

Usage: ELISA: 0.05µg/mL – 0.2µg/mL;
IHC, ICC: 0.5µg/mL – 2µg/mL.

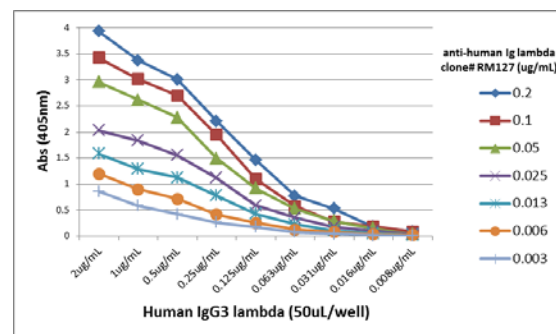
Storage: Stable for 1 Year at -20.0°C from date of receipt.

Country of Origin: U.S.A.

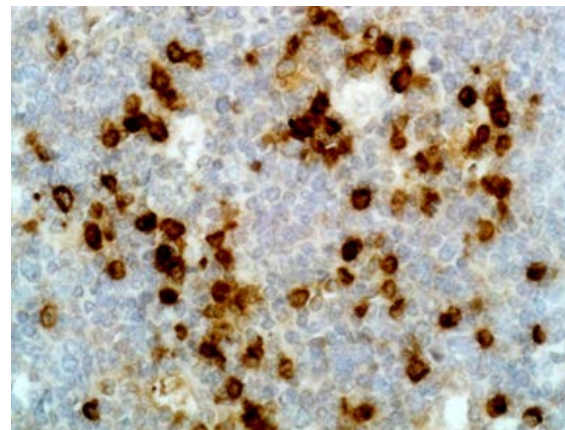
Intended Use: For Research Use Only Not for Diagnostic or
Therapeutic Use



ELISA of human immunoglobulins shows RM127 reacts to the lambda light chain of human immunoglobulins. No cross reactivity with the kappa light chain, mouse IgG, rat IgG, or goat IgG. The plate was coated with 50 ng/well of different immunoglobulins. 200 ng/mL or 50 ng/mL of RM127 was used as the primary antibody. An alkaline phosphatase conjugated anti-rabbit IgG as the secondary antibody.



A titer ELISA using RM127. The plate was coated with different amounts of human IgG3λ. A serial dilution of RM127 was used as the primary antibody. An alkaline phosphatase conjugated anti-rabbit IgG as the secondary antibody.



Immunohistochemistry of Human Tonsil using Anti-Lambda Light Chain antibody RM127.