

Beratung und Vertrieb

Fon + 49 (0) 40 45 067 0

dianova

Fax + 49 (0) 40 450 67 490

info@dianova.de

Warburgstr. 45 • 20354 Hamburg

www.dianova.de

Product:

Rabbit Monoclonal Antibody

Biotin Anti-Human IgA ($\alpha 1$ & $\alpha 2$) Rabbit Monoclonal Antibody, Clone RM128

Catalog No.:

31-1030-02

Lot No.:

Clone

RM128

Specificity

This antibody reacts to human IgA, including both IgA1 and IgA2. No cross reactivity with human IgG, IgM, IgD, or IgE.

Application:

ELISA, Immunohistochemistry, Immunocytochemistry, Flow Cytometry

Immunogen:

Human IgA

Purity:

Protein A affinity purified from an animal origin-free culture supernatant

Size:

50 μ g

Concentration:

1.0 mg/mL

Buffer:

50% Glycerol/PBS with 1% BSA and 0.09% sodium azide

Usage:

ELISA: 50ng/well – 200ng/well (for Capture);
0.05ug/mL – 0.2ug/mL (for Detection);

ICC: 0.5ug/mL-2ug/mL;

IHC: 0.1ug/mL – 1ug/mL

Storage and

Stability:

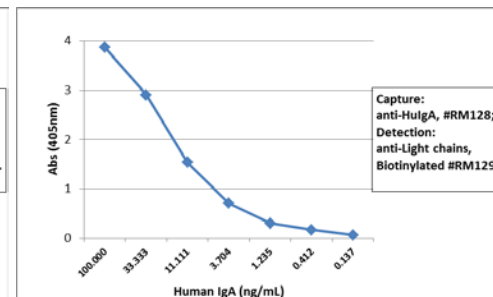
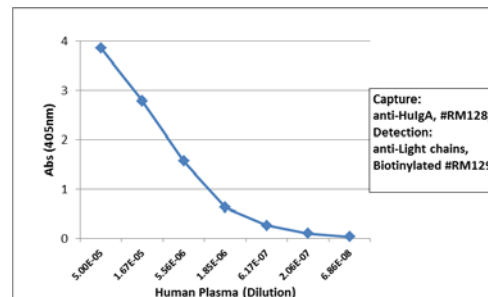
Stable for 1 Year at -20.0°C from date of receipt.

Country of Origin:

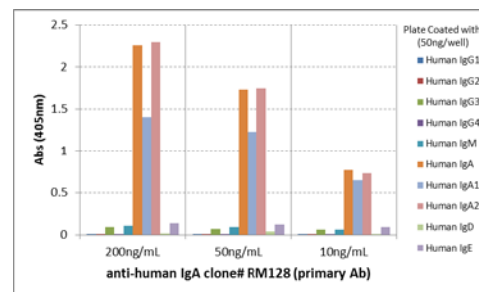
U.S.A.

Intended Use:

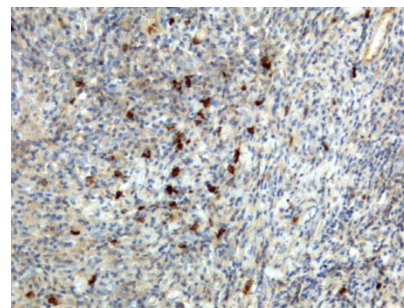
For Research Use Only Not for Diagnostic or Therapeutic Use



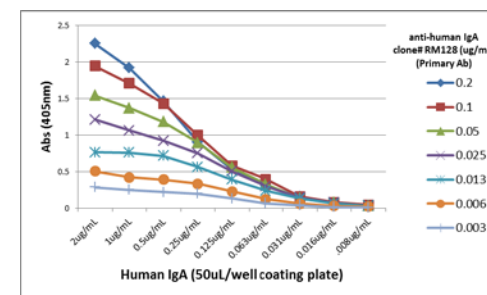
Sandwich ELISA using RM128 as the capture antibody (100ng/well), and Biotinylated anti-human light chains ($\kappa + \lambda$) antibody RM129 as the detection antibody, followed by an alkaline phosphatase conjugated streptavidin.



ELISA of human immunoglobulins shows RM128 reacts to human IgA, including both IgA1 and IgA2. No cross reactivity with human IgG, IgM, IgD, or IgE. The plate was coated with 50 ng/well of different immunoglobulins. 200 ng/mL, 50ng/mL, or 10 ng/mL of RM128 was used as the primary antibody. An alkaline phosphatase conjugated anti-rabbit IgG as the secondary antibody.



Immunohistochemistry of Human Lymphoid Tissue using Anti-Human IgA antibody



A titer ELISA using RM128. The plate was coated with different amounts of human IgA. A serial dilution of RM128 was used as the primary antibody. An alkaline phosphatase conjugated anti-rabbit IgG as the secondary antibody.