

Certificate of Analysis

Product:	Rabbit Monoclonal Antibody Anti-Trimethyl-Histone H3 (Lys4) Rabbit Monoclonal Antibody, Clone RM137
Catalog No.:	31-1039-00
Lot No.:	
Clone	RM137
Specificity	This antibody reacts to Histone H3 trimethylated at Lysine 4 (K4me3). No cross reactivity with monomethylated Lysine 4 (K4me1), dimethylated Lysine 4 (K4me2), or other methylations in histone H3.
Application:	Western Blot, ELISA, Multiplex
Immunogen:	A trimethyl-peptide corresponding to Trimethyl-Histone H3 (Lys4).
Purity:	Protein A affinity purified from an animal origin-free culture supernatant
Size:	100 µg
Concentration:	1.0 mg/mL
Buffer:	50% Glycerol/PBS with 1% BSA and 0.09% sodium azide
Usage:	WB: 0.2 µg/mL – 1 µg/mL; ELISA: 0.1 µg/mL – 0.5 µg/mL; Multiplex: 0.1 µg/mL – 0.5 µg/mL.
Storage and Stability:	Stable for 1 Year at -20.0°C from date of receipt.
Country of Origin:	U.S.A.
Intended Use:	For Research Use Only Not for Diagnostic or Therapeutic Use

Beratung und Vertrieb

Fon + 49 (0) 40 45 067 0

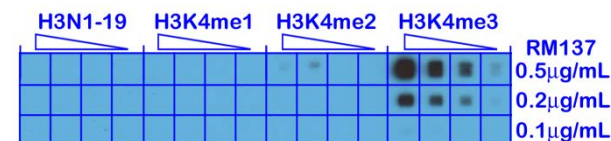
dianova

Fax + 49 (0) 40 450 67 490

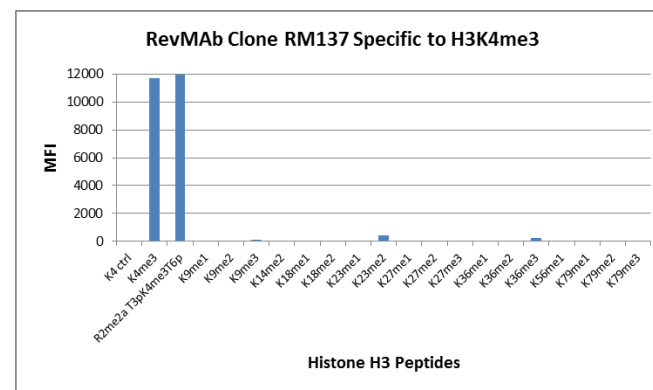
info@dianova.de

Warburgstr. 45 • 20354 Hamburg

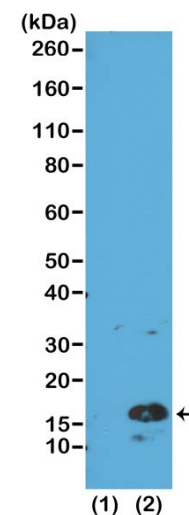
www.dianova.de



A Peptide dotblot shows RM137 reacts only to Histone H3 trimethyl-Lysine 4 (K4me3). No cross reactivity with nonmodified Lysine 4 (H3N1-19), monomethylated Lysine 4 (K4me1) or dimethylated Lysine 4 (K4me2).



RM137 specifically reacts to Histone H3 trimethylated at Lysine 4 (K4me3). No cross reactivity with other methylated lysines in Histone H3.



Western Blot of recombinant histone H3.3 (1) and acid extracts of HeLa cells (2), using RM137 at 0.5 µg/mL, showed a band of histone H3 trimethylated at Lysine 4 (K4me3) in HeLa cells.