

## Certificate of Analysis

<b>Product:</b>	Rabbit Monoclonal Antibody Anti-BRAF V600E Rabbit Monoclonal Antibody, Clone RM8
<b>Catalog No.:</b>	31-1042-00
<b>Lot No.:</b>	
<b>Clone:</b>	RM8
<b>Specificity:</b>	This antibody reacts to the BRAF V600E mutant. No cross reactivity with wild type BRAF.
<b>Application:</b>	Immunohistochemistry, Immunocytochemistry, Western Blot.
<b>Immunogen:</b>	A peptide corresponding to BRAF V600E mutant
<b>Purity:</b>	Protein A affinity purified from an animal origin-free culture supernatant
<b>Concentration:</b>	1 mg/mL
<b>Size:</b>	100 µg
<b>Buffer:</b>	50% Glycerol/PBS with 1% BSA and 0.09% sodium azide
<b>Usage:</b>	IHC, ICC: 2 – 10 µg/mL; ELISA: 0.5 – 2 µg/mL; WB: 0.5 – 2 µg/mL.
<b>Storage and Stability:</b>	Stable for 1 Year at -20.0°C from date of receipt.
<b>Country of Origin:</b>	U.S.A.
<b>Intended Use:</b>	<b>For Research Use Only Not for Diagnostic or Therapeutic Use</b>

Beratung und Vertrieb

**dianova**

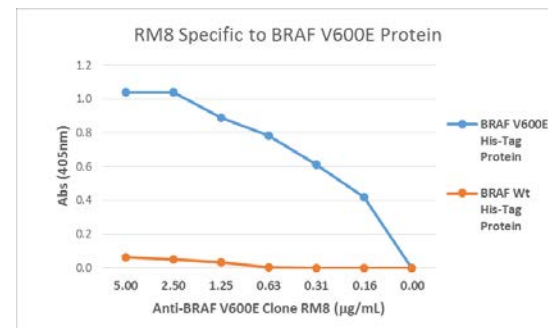
Warburgstr. 45 • 20354 Hamburg

Fon + 49 (0) 40 45 067 0

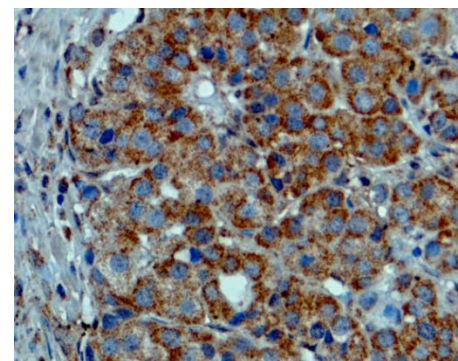
Fax + 49 (0) 40 450 67 490

info@dianova.de

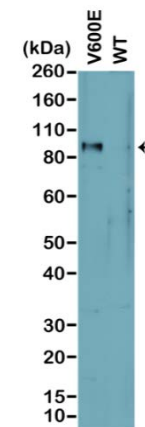
www.dianova.de



Sandwich ELISA performed on the lysates of 293T cells overexpressing BRAF V600E or BRAF wild type His-tag proteins, shows the specificity of RM8 to the V600E mutation. His-tag fusion proteins were captured by an Anti-His-Tag antibody.



Immunohistochemical staining of formalin fixed and paraffin embedded melanoma tissue sections.



Western Blot analysis of cell lysates prepared from cell lines expressing endogenous mutant (V600E) BRAF or wild type (WT) protein.