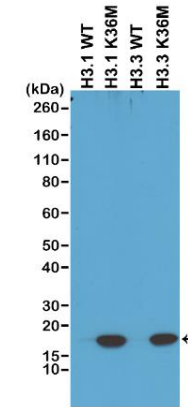
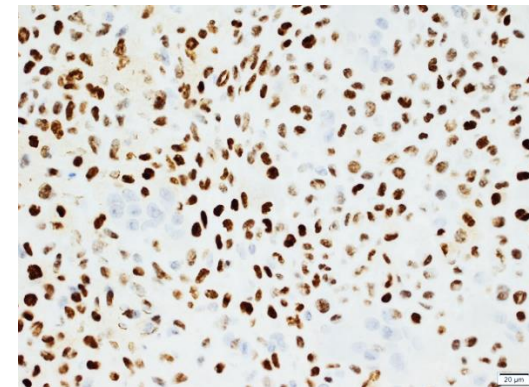


## Certificate of Analysis

<b>Product:</b>	Rabbit Monoclonal Antibody Anti-Histone H3 K36M Rabbit Monoclonal Antibody, Clone RM193
<b>Catalog No.:</b>	31-1085-00-S/31-1085-00-L
<b>Lot No.:</b>	
<b>Clone:</b>	RM193
<b>Specificity:</b>	This antibody reacts to the Histone H3 K36M mutant. No cross reactivity with wild type Histone H3.
<b>Application:</b>	Western Blot, ELISA, Immunohistochemistry, and Chromatin IP
<b>Immunogen:</b>	A peptide corresponding to Histone H3 K36M mutant
<b>Purity:</b>	Protein A affinity purified from an animal origin-free culture supernatant
<b>Size:</b>	100 µL/400µL
<b>Buffer:</b>	50% Glycerol/PBS with 1% BSA and 0.09% sodium azide
<b>Usage:</b>	WB: 1:200-1:1000; ELISA: 1:250-1:2500; IHC: 1:100-1:500.
<b>Storage and Stability:</b>	Stable for 1 Year at -20.0°C from date of receipt.
<b>Country of Origin:</b>	U.S.A.
<b>Intended Use:</b>	<b>For Research Use Only Not for Diagnostic or Therapeutic Use</b>



Western Blot analysis of cell lysates prepared from 293T transfected with a DNA construct encoding wild type or K36M mutant proteins of Histone H3.1 and H3.3, using anti-Histone H3 K36M antibody, clone RM193.



Immunohistochemical staining of formalin fixed paraffin embedded Chondroblastoma tumor section with H3 K36M expression using Anti-Histone H3 K36M antibody, clone RM193. *Image courtesy of Adrienne Flanagan, Department of Histopathology, RONH, Stanmore, Middlesex, UK*