

Beratung und Vertrieb

Fon + 49 (0) 40 45 067 0

dianova

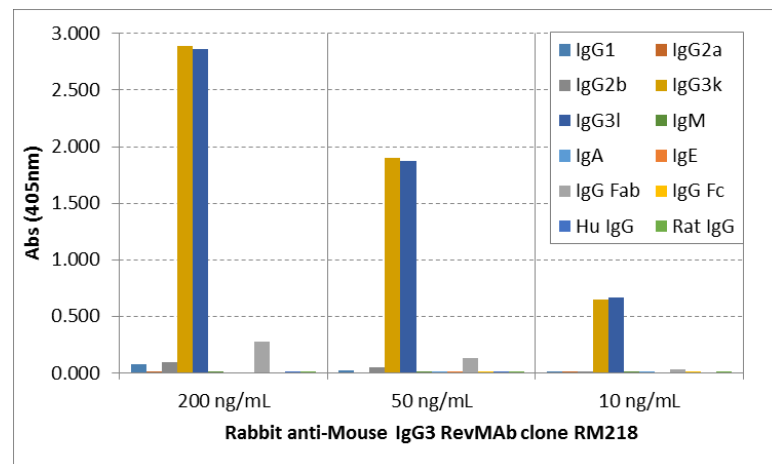
Fax + 49 (0) 40 450 67 490

info@dianova.de

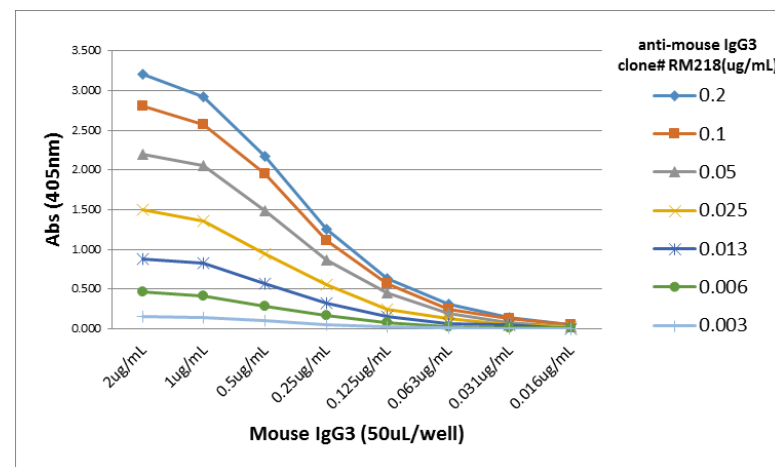
Warburgstr. 45 • 20354 Hamburg

www.dianova.de

<b>Product:</b>	Rabbit Monoclonal Antibody
	Biotin Anti-Mouse IgG3 Rabbit Monoclonal Antibody, Clone RM218
<b>Catalog No.:</b>	31-1094-02
<b>Lot No.:</b>	
<b>Clone</b>	RM218
<b>Specificity</b>	This antibody reacts to the Fab region of mouse IgG3. No cross reactivity with mouse IgG1, IgG2a, IgG2b, IgM, IgA, IgE, human IgG, or rat IgG.
<b>Application:</b>	ELISA, Flow Cytometry, Immunocytochemistry, Immunohistochemistry, Immunoprecipitation, Western Blot.
<b>Immunogen:</b>	Mouse IgG3
<b>Purity:</b>	Protein A affinity purified from an animal origin-free and protein-free culture supernatant
<b>Size:</b>	50 µg
<b>Concentration:</b>	1.0 mg/mL
<b>Buffer:</b>	50% Glycerol/PBS with 1% BSA and 0.09% sodium azide
<b>Usage:</b>	ELISA: 0.005ug/mL – 0.2ug/mL; ICC, IHC: 0.5ug/mL – 2ug/mL; WB: 0.1ug/mL – 0.5ug/mL
<b>Storage and Stability:</b>	Stable for 1 Year at -20.0°C from date of receipt.
<b>Country of Origin:</b>	U.S.A.
<b>Intended Use:</b>	<b>For Research Use Only Not for Diagnostic or Therapeutic Use</b>



ELISA of mouse immunoglobulins shows RM218 reacts to both mouse IgG3κ and IgG3λ; No cross reactivity with mouse IgG1, IgG2a, IgG2b, IgM, IgA, IgE, human IgG, or rat IgG. The plate was coated with 50 ng/well of different immunoglobulins. 200 ng/mL, 50 ng/mL, or 10 ng/mL of RM218 was used as the primary antibody. An alkaline phosphatase conjugated anti-rabbit IgG as the secondary antibody.



A titer ELISA of mouse IgG3. The plate was coated with different amounts of mouse IgG3. A serial dilution of RM218 was used as the primary antibody. An alkaline phosphatase conjugated anti-rabbit IgG as the secondary antibody.