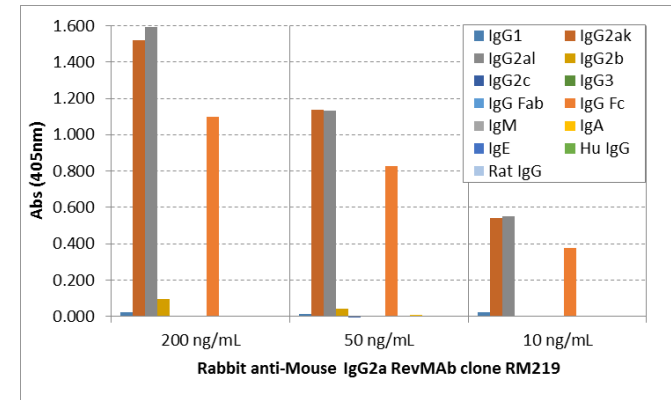
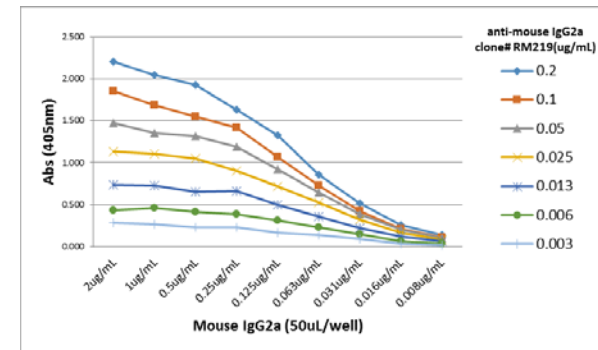


## Certificate of Analysis

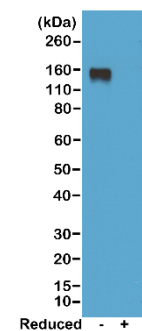
<b>Product:</b>	Rabbit Monoclonal Antibody Anti-Mouse IgG2a Rabbit Monoclonal Antibody, Clone RM219
<b>Catalog No.:</b>	31-1098-00
<b>Lot No.:</b>	
<b>Clone</b>	RM219
<b>Specificity</b>	This antibody reacts to the Fc region of mouse IgG2a. No cross reactivity with mouse IgG1, IgG2b, IgG2c, IgG3, IgM, IgA, IgE, human IgG, or rat IgG.
<b>Application:</b>	ELISA, Flow Cytometry, Immunocytochemistry, Immunohistochemistry, Immunoprecipitation, Western Blot (nonreduced).
<b>Immunogen:</b>	Mouse IgG2a
<b>Purity:</b>	Protein A affinity purified from an animal origin-free and protein-free culture supernatant
<b>Size:</b>	100 µg
<b>Concentration:</b>	1.0 mg/mL
<b>Buffer:</b>	50% Glycerol/PBS with 1% BSA and 0.09% sodium azide
<b>Usage:</b>	ELISA: 0.005ug/mL – 0.2ug/mL; ICC, IHC: 0.5ug/mL – 2ug/mL; WB: 0.5ug/mL – 2ug/mL
<b>Storage and Stability:</b>	Stable for 1 Year at -20.0°C from date of receipt.
<b>Country of Origin:</b>	U.S.A.
<b>Intended Use:</b>	<b>For Research Use Only Not for Diagnostic or Therapeutic Use</b>



ELISA of mouse immunoglobulins shows RM219 reacts to the Fc region of mouse IgG2a; no cross reactivity with IgG1, IgG2b, IgG2c, IgG3, IgM, IgA, IgE, human IgG, or rat IgG. The plate was coated with 50 ng/well of different immunoglobulins. 200 ng/mL, 50 ng/mL, or 10 ng/mL of RM219 was used as the primary antibody. An alkaline phosphatase conjugated anti-rabbit IgG as the secondary antibody.



A titer ELISA of mouse IgG2a. The plate was coated with different amount of mouse IgG2a. A serial dilution of RM219 was used as the primary antibody. An alkaline phosphatase conjugated anti-rabbit IgG as the secondary antibody.



Western blot of nonreduced(-) and reduced(+) mouse IgG2a, using 0.5ug/mL of RevMAB clone RM219. This antibody reacts to nonreduced IgG2a (~150 kDa).