

Beratung und Vertrieb

Fon + 49 (0) 40 45 067 0

dianova

Fax + 49 (0) 40 450 67 490

info@dianova.de

Warburgstr. 45 • 20354 Hamburg

www.dianova.de

**Product:** Rabbit Monoclonal Antibody  
Biotin Anti-Mouse IgA Rabbit Monoclonal Antibody,  
Clone RM220

**Catalog No.:** 31-1099-02

**Lot No.:**

**Clone** RM220

**Specificity** This antibody specifically reacts to mouse IgA. No cross reactivity with mouse IgG1, IgG2a, IgG2b, IgG2c, IgG3, IgM, IgE, or human IgA.

**Application:** ELISA, Flow Cytometry, Immunocytochemistry, Immunohistochemistry, Immunoprecipitation, Western Blot (nonreduced).

**Immunogen:** Mouse IgA

**Purity:** Protein A affinity purified from an animal origin-free and protein-free culture supernatant

**Size:** 50 µg

**Concentration:** 1.0 mg/mL

**Buffer:** 50% Glycerol/PBS with 1% BSA and 0.09% sodium azide

**Usage:** ELISA: 0.005ug/mL – 0.2ug/mL;

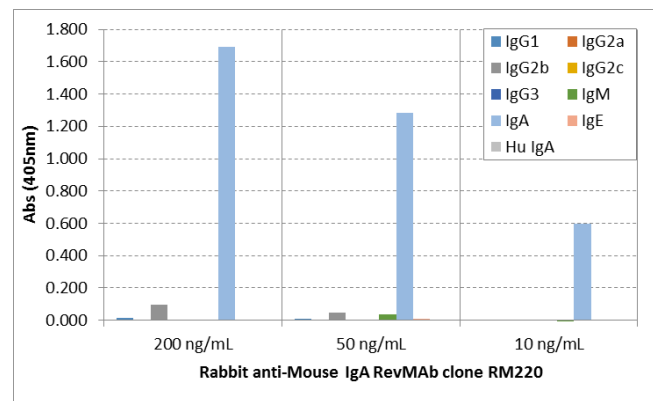
ICC, IHC: 0.5ug/mL – 2ug/mL;

WB: 0.5ug/mL – 2ug/mL

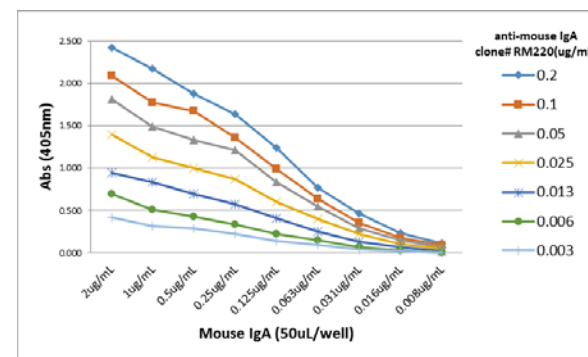
**Storage and Stability:** Stable for 1 Year at -20.0°C from date of receipt.

**Country of Origin:** U.S.A.

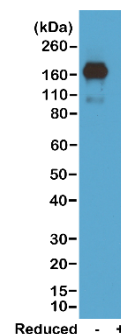
**Intended Use:** For Research Use Only Not for Diagnostic or Therapeutic Use



ELISA of mouse immunoglobulins shows RM220 reacts to mouse IgA. No cross reactivity with mouse IgG1, IgG2a, IgG2b, IgG2c, IgG3, IgM, IgE, or human IgA. The plate was coated with 50 ng/well of different immunoglobulins. 200 ng/mL, 50 ng/mL, or 10 ng/mL of RM220 was used as the primary antibody. An alkaline phosphatase conjugated anti-rabbit IgG as the secondary antibody.



A titer ELISA of mouse IgA. The plate was coated with different amount of mouse IgA. A serial dilution of RM220 was used as the primary antibody. An alkaline phosphatase conjugated anti-rabbit IgG as the secondary antibody.



Western blot of nonreduced(-) and reduced(+) mouse IgA, using 0.5ug/mL of RevMAb clone RM220. This antibody reacts to nonreduced IgA.