

Beratung und Vertrieb

Fon + 49 (0) 40 45 067 0

**dianova**

Fax + 49 (0) 40 450 67 490

info@dianova.de

Warburgstr. 45 • 20354 Hamburg

www.dianova.de

**Product:**

Rabbit Monoclonal Antibody

Anti-Mouse IgG2c Rabbit Monoclonal Antibody,  
Clone RM223

**Catalog No.:**

31-1103-00

**Lot No.:**

**Clone**

RM223

**Specificity**

This antibody reacts to the Fc region of mouse IgG2c.  
No cross reactivity with mouse IgG1, IgG2a, IgG2b,  
IgG3, IgM, IgA, IgE, human IgG, or rat IgG.

**Application:**

ELISA, Flow Cytometry, Immunocytochemistry,  
Immunohistochemistry, Immunoprecipitation, Western  
Blot (non-reduced).

**Immunogen:**

Mouse IgG2c

**Purity:**

Protein A affinity purified from an animal origin-free  
and protein-free culture supernatant

**Size:**

100 µg

**Concentration:**

1.0 mg/mL

**Buffer:**

50% Glycerol/PBS with 1% BSA and 0.09% sodium azide

**Usage:**

ELISA: 0.01µg/mL – 0.2µg/mL;  
ICC, IHC: 0.5µg/mL – 2µg/mL;  
WB(non-reduced): 0.5µg/mL – 2µg/mL

**Storage and Stability:**

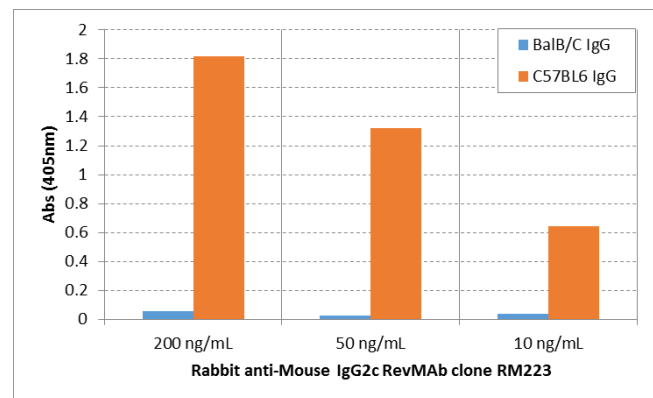
Stable for 1 Year at -20.0°C from date of receipt.

**Country of Origin:**

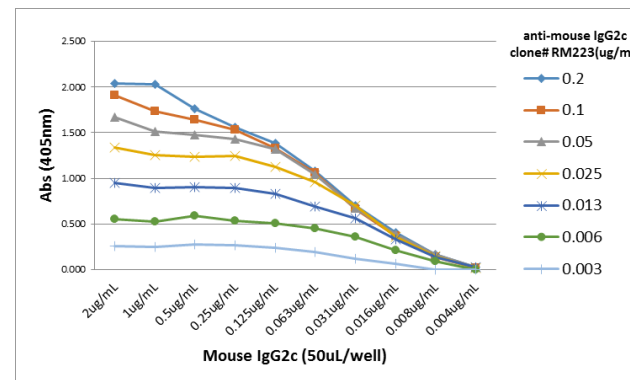
U.S.A.

**Intended Use:**

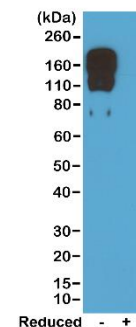
**For Research Use Only Not for Diagnostic or  
Therapeutic Use**



ELISA of IgG from BalB/C and C57BL6 shows RM223 reacts to C57BL6 IgG containing IgG2c, and does not react to BalB/C IgG containing IgG2a. 200 ng/mL, 50 ng/mL, or 10 ng/mL of RM223 was used as the primary antibody. An alkaline phosphatase conjugated anti-rabbit IgG as the secondary antibody.



A titer ELISA of mouse IgG2c. The plate was coated with different amounts of mouse IgG2c. A serial dilution of RM223 was used as the primary antibody. An alkaline phosphatase conjugated anti-rabbit IgG as the secondary antibody.



Western blot of nonreduced(-) and reduced(+) mouse IgG2c, using 0.5µg/mL of RevMAB clone RM223. This antibody reacts to nonreduced IgG2c.