

Beratung und Vertrieb

Fon + 49 (0) 40 45 067 0

dianova

Fax + 49 (0) 40 450 67 490

info@dianova.de

Warburgstr. 45 • 20354 Hamburg

www.dianova.de

Product: Rabbit Monoclonal Antibody
Biotin Anti-Mouse IgG2c Rabbit Monoclonal Antibody,
Clone RM223

Catalog No.: 31-1103-02

Lot No.:

Clone RM223

Specificity This antibody reacts to the Fc region of mouse IgG2c.
No cross reactivity with mouse IgG1, IgG2a, IgG2b,
IgG3, IgM, IgA, IgE, human IgG, or rat IgG.

Application: ELISA, Flow Cytometry, Immunocytochemistry,
Immunohistochemistry, Immunoprecipitation, Western
Blot (non-reduced).

Immunogen: Mouse IgG2c

Purity: Protein A affinity purified from an animal origin-free
and protein-free culture supernatant

Size: 50 µg

Concentration: 1.0 mg/mL

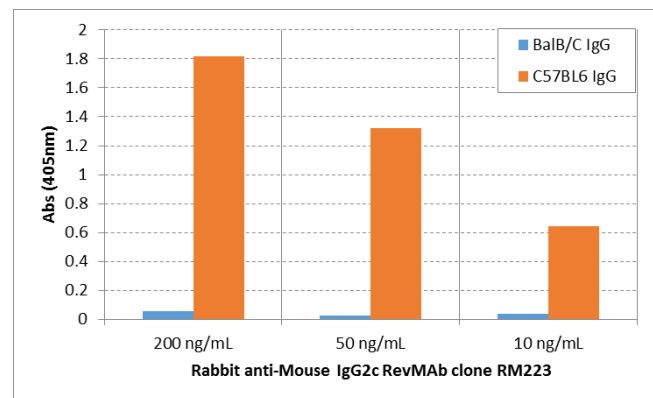
Buffer: 50% Glycerol/PBS with 1% BSA and 0.09% sodium azide

Usage: ELISA: 0.01µg/mL – 0.2µg/mL;
ICC, IHC: 0.5µg/mL – 2µg/mL;
WB(non-reduced): 0.5µg/mL – 2µg/mL

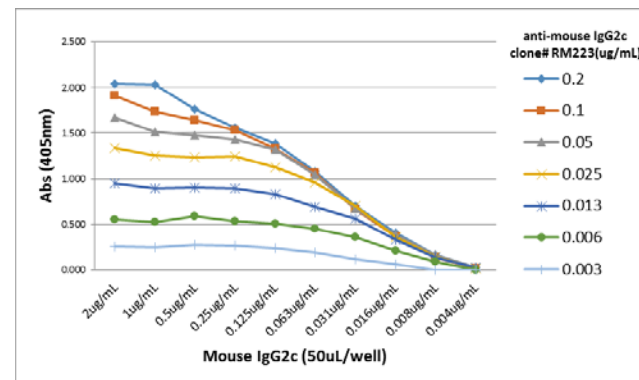
Storage and Stability: Stable for 1 Year at -20.0°C from date of receipt.

Country of Origin: U.S.A.

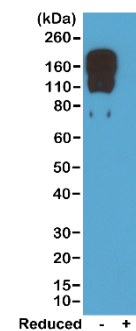
Intended Use: For Research Use Only Not for Diagnostic or
Therapeutic Use



ELISA of IgG from BalB/C and C57BL6 shows RM223 reacts to C57BL6 IgG containing IgG2c, and does not react to BalB/C IgG containing IgG2a. 200 ng/mL, 50 ng/mL, or 10 ng/mL of RM223 was used as the primary antibody. An alkaline phosphatase conjugated anti-rabbit IgG as the secondary antibody.



A titer ELISA of mouse IgG2c. The plate was coated with different amounts of mouse IgG2c. A serial dilution of RM223 was used as the primary antibody. An alkaline phosphatase conjugated anti-rabbit IgG as the secondary antibody.



Western blot of nonreduced(-) and reduced(+) mouse IgG2c, using 0.5µg/mL of RevMAB clone RM223. This antibody reacts to nonreduced IgG2c.