

Beratung und Vertrieb Fon + 49 (0) 40 45 067 0

dianova

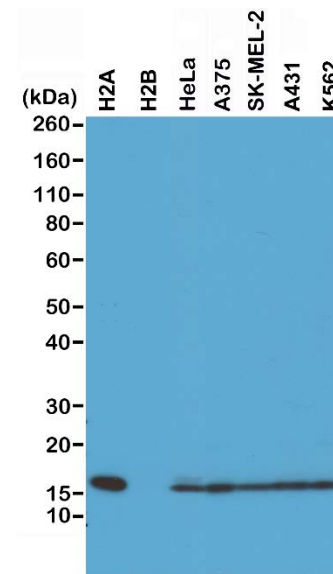
Warburgstr. 45 • 20354 Hamburg

Fax + 49 (0) 40 450 67 490

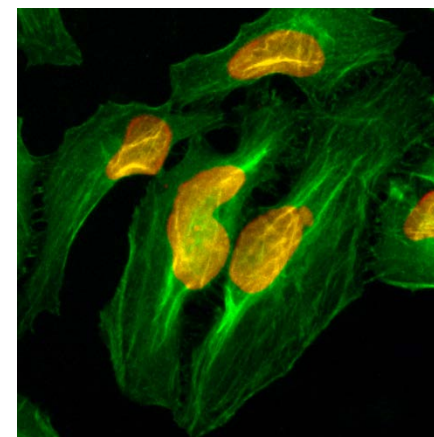
info@dianova.de

www.dianova.de

Product:	Rabbit Monoclonal Antibody Anti-Histone H2A Rabbit Monoclonal Antibody, Clone RM225
Catalog No.:	31-1108-00
Lot No.:	
Clone	RM225
Specificity	This antibody reacts to the Histone H2A protein, independent of post-translational modifications. No cross reactivity with other histone proteins.
Application:	Western Blot, Immunocytochemistry, ELISA, Multiplex
Immunogen:	A peptide corresponding to the C-terminus of human Histone H2A.
Purity:	Protein A affinity purified from an animal origin-free culture supernatant
Concentration:	1.0 mg/mL
Buffer:	50% Glycerol/PBS with 1% BSA and 0.09% sodium azide
Usage:	WB: 0.5 µg/mL - 2 µg/mL; ICC: 1 µg/mL - 2 µg/mL; ELISA: 0.2 µg/mL - 1 µg/mL; Multiplex: 0.2 µg/mL - 1 µg/mL.
Storage and Stability:	Stable for 1 Year at -20.0°C from date of receipt
Country of Origin:	U.S.A.
Intended Use:	For Research Use Only Not for Diagnostic or Therapeutic Use



Western Blot of recombinant Histone H2A, H2B, the whole cell lysates of HeLa, A375, SK-MEL-2, A431, and K562, using RM225 at 0.5 µg/mL



Immunocytochemistry of HeLa cells, using Histone H2A Rabbit mAb RM225 (red). Actin filaments have been labeled with fluorescein phalloidin (green).