

Beratung und Vertrieb Fon + 49 (0) 40 45 067 0

dianova

Fax + 49 (0) 40 450 67 490

info@dianova.de

Warburgstr. 45 • 20354 Hamburg

www.dianova.de

Product: Rabbit Monoclonal Antibody

Anti-5-Methylcytosine Rabbit Monoclonal Antibody,
Clone RM231

Catalog No.: 31-1110-00

Lot No.:

Clone RM231

Specificity This antibody reacts to 5-methylcytosine in both single-stranded and double-stranded DNA. No cross reactivity with non-methylated cytosine and hydroxymethylcytosine in DNA.

Application: MeDIP, ELISA, Dot Blot, Immunocytochemistry, Immunohistochemistry.

Immunogen: BSA-conjugated 5-methylcytosine.

Purity: Protein A affinity purified from an animal origin-free culture supernatant

Size: 50 µg

Concentration: 1.0 mg/mL

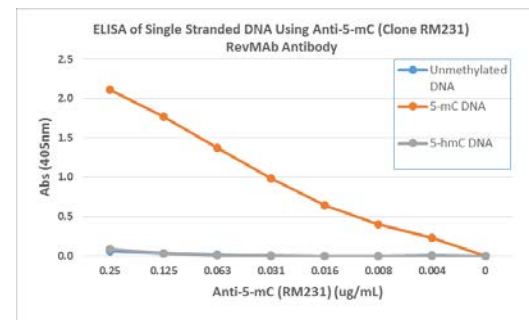
Buffer: 50% Glycerol/PBS with 1% BSA and 0.09% sodium azide

Usage: Dot Blot: 0.5 µg/mL - 2 µg/mL;
ICC: 0.5 µg/mL - 2 µg/mL;
ELISA: 0.1µg/mL - 1 µg/mL.

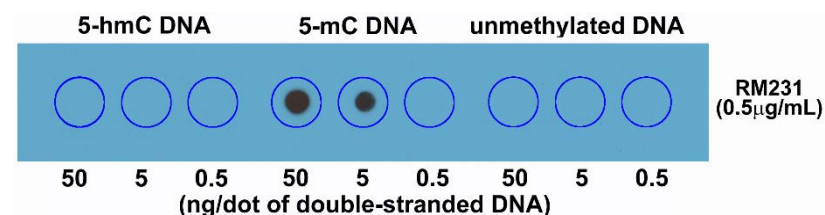
Storage and Stability: Stable for 1 Year at -20.0°C from date of receipt.

Country of Origin: U.S.A.

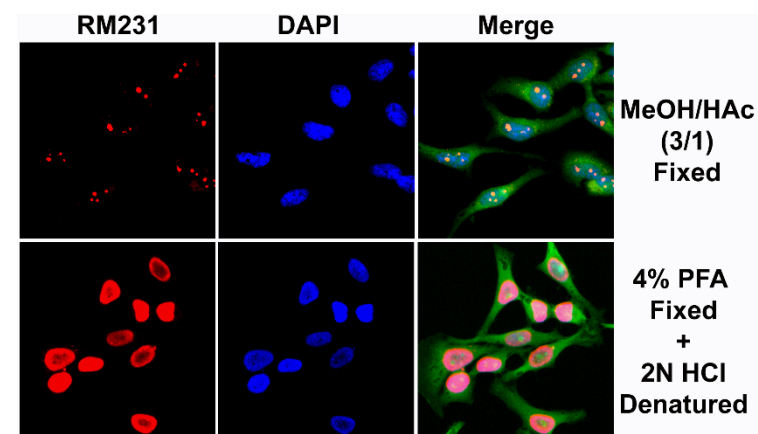
Intended Use: For Research Use Only Not for Diagnostic or Therapeutic Use



ELISA of single stranded DNA using rabbit monoclonal anti-5-mC (clone RM231) antibody. The plate was coated with streptavidin and then biotinylated single stranded unmethylated DNA, 5-Methylcytosine (5-mC) DNA, and 5-Hydroxymethylcytosine (5-hmC) DNA. A serial dilution of RM231 was used as the primary antibody, and an alkaline phosphatase conjugated anti-rabbit IgG as the secondary antibody.



Dot blot of double stranded DNA using rabbit monoclonal anti-5-mC (clone RM231) antibody. The membrane was pre-spotted with 50, 5, and 0.5 ng/dot of double stranded 5-Hydroxymethylcytosine (5-hmC) DNA, 5-Methylcytosine (5-mC) DNA, and unmethylated DNA. The pre-spotted membrane was then blotted with RM231.



Immunocytochemical staining of HeLa cells using rabbit monoclonal anti-5-mC (clone RM231) antibody (red). Actin filaments have been labeled with fluorescein phalloidin (green), and nuclei stained with DAPI (blue).