

Beratung und Vertrieb Fon + 49 (0) 40 45 067 0

dianova Fax + 49 (0) 40 450 67 490
info@dianova.de

Warburgstr. 45 • 20354 Hamburg www.dianova.de

Product: Rabbit Monoclonal Antibody
Anti-Histone H2B Rabbit Monoclonal Antibody, Clone RM230

Catalog No.: 31-1112-00

Lot No.:

Clone RM230

Specificity This antibody reacts to the Histone H2B protein, independent of post-translational modifications. No cross reactivity with other histone proteins.

Application: Western Blot, Immunocytochemistry, ELISA, Multiplex

Immunogen: A peptide corresponding to the C-terminus of human Histone H2B.

Purity: Protein A affinity purified from an animal origin-free culture supernatant

Concentration: 1.0 mg/mL

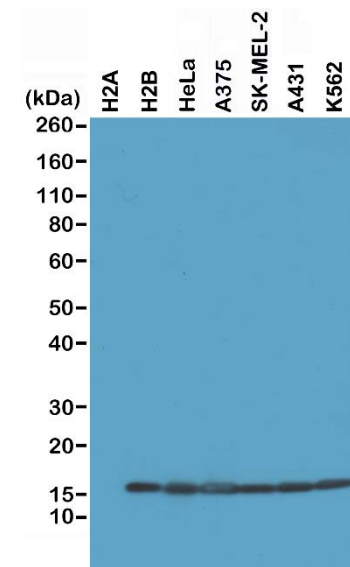
Buffer: 50% Glycerol/PBS with 1% BSA and 0.09% sodium azide

Usage: WB: 0.1 µg/mL - 1 µg/mL;
ICC: 0.5 µg/mL - 1 µg/mL;
ELISA: 0.2 µg/mL - 1 µg/mL;
Multiplex: 0.2 µg/mL - 1 µg/mL.

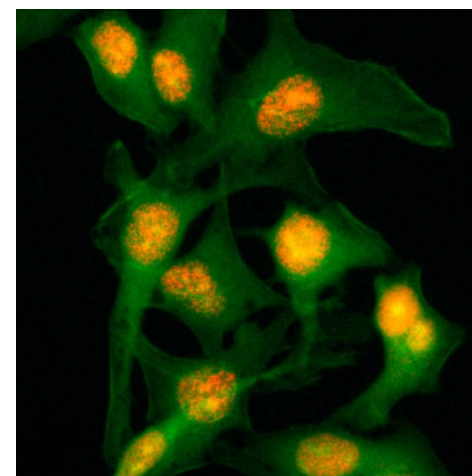
Storage and Stability: Stable for 1 Year at -20.0°C from date of receipt

Country of Origin: U.S.A.

Intended Use: For Research Use Only Not for Diagnostic or Therapeutic Use



Western Blot of recombinant Histone H2A, H2B, the whole cell lysates of HeLa, A375, SK-MEL-2, A431, and K562, using RM230 at 0.2 µg/mL



Immunocytochemical staining of HeLa cells, using Histone H2B Rabbit mAb RM230 (red). Actin filaments have been labeled with fluorescein phalloidin (green).