

Beratung und Vertrieb

Fon + 49 (0) 40 45 067 0

dianova

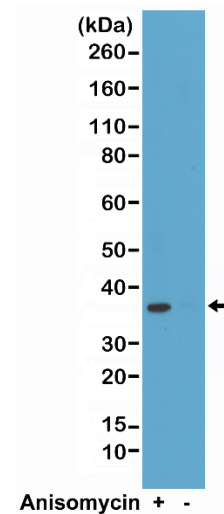
Fax + 49 (0) 40 450 67 490

info@dianova.de

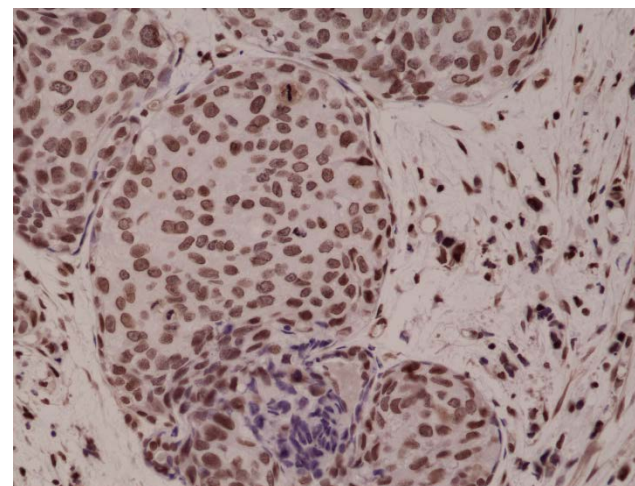
Warburgstr. 45 • 20354 Hamburg

www.dianova.de

Product:	Rabbit Monoclonal Antibody Anti-Phospho-p38 MAPK (Thr180/Tyr182) Rabbit Monoclonal Antibody, Clone RM243
Catalog No.:	31-1125-00
Lot No.:	
Clone:	RM243
Specificity:	This antibody reacts to p38 MAPK only when dual phosphorylation at Thr180 and Tyr182 is observed. There is no cross-reactivity with p38 MAPK without dual phosphorylation at Thr180 and Tyr182.
Application:	Immunohistochemistry, Western Blot
Immunogen:	A phospho-peptide corresponding to human Phospho-p38 MAPK (Thr180/Tyr182)
Purity:	Protein A affinity purified from an animal origin-free culture supernatant
Size:	100 µL
Buffer:	50% Glycerol/PBS with 1% BSA and 0.09% sodium azide
Usage:	WB: 1:1000 -1:2000 dilution; IHC: 1:500 - 1:1000 dilution.
Storage and Stability:	Stable for 1 Year at -20.0°C from date of receipt.
Country of Origin:	U.S.A.
Intended Use:	For Research Use Only Not for Diagnostic or Therapeutic Use



Western Blot of HeLa cell lysates, treated or nontreated with anisomycin using Anti-Phospho-p38 MAPK (Thr180/Tyr182) RM243 at a 1:2000 dilution, showed a band of Phospho-p38 MAPK (~38 kDa) in anisomycin-treated HeLa cells.



Immunohistochemical staining of formalin fixed and paraffin embedded human breast cancer tissue sections using Anti-Phospho-p38 MAPK (Thr180/Tyr182) RM243 at a 1:1000 dilution.