

Beratung und Vertrieb

Fon + 49 (0) 40 45 067 0

dianova

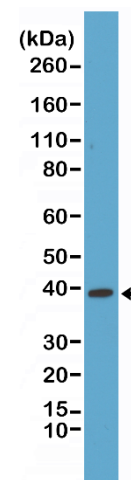
Fax + 49 (0) 40 450 67 490

info@dianova.de

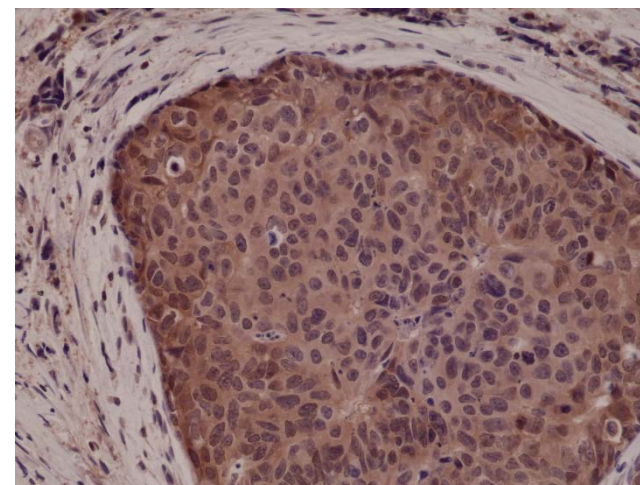
Warburgstr. 45 • 20354 Hamburg

www.dianova.de

Product:	Rabbit Monoclonal Antibody Anti-p38 MAPK Rabbit Monoclonal Antibody, Clone RM245
Catalog No.:	31-1126-00
Lot No.:	
Clone:	RM245
Specificity:	This antibody reacts to human p38 MAPK. This antibody may also react to rat and mouse p38 MAPK, as predicted by immunogen homology.
Application:	Immunohistochemistry, Western Blot
Immunogen:	A peptide corresponding to human p38 MAPK
Purity:	Protein A affinity purified from an animal origin-free culture supernatant
Size:	100 µL
Buffer:	50% Glycerol/PBS with 1% BSA and 0.09% sodium azide
Usage:	IHC: 1:1000 -1:5000 dilution; WB: 1:1000 - 1:2000 dilution.
Storage and Stability:	Stable for 1 Year at -20.0°C from date of receipt.
Country of Origin:	U.S.A.
Intended Use:	For Research Use Only Not for Diagnostic or Therapeutic Use



Western Blot of HeLa cells lysates using Anti-p38 MAPK RM245 at a 1:1000 dilution, showed a band of p38 MAPK (~38 kDa) expressed in HeLa cells.



Immunohistochemical staining of formalin fixed and paraffin embedded human breast cancer tissue sections using Anti-p38 MAPK RM245 at a 1:5000 dilution.