

Beratung und Vertrieb

Fon + 49 (0) 40 45 067 0

**dianova**

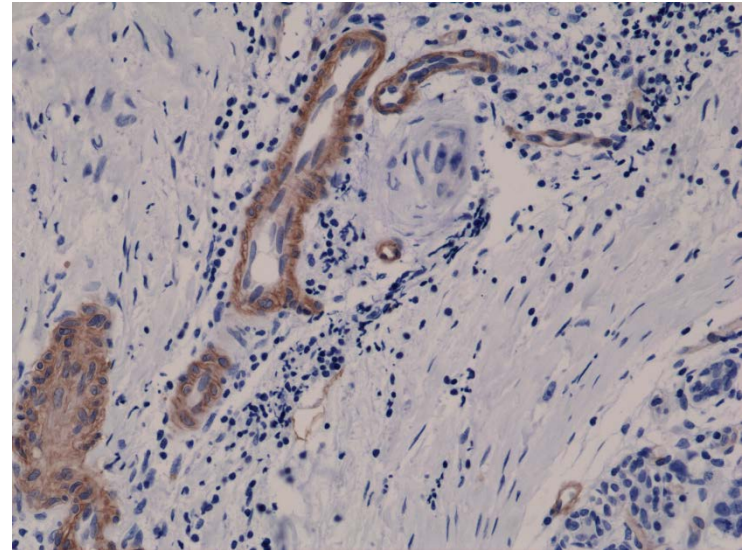
Fax + 49 (0) 40 450 67 490

info@dianova.de

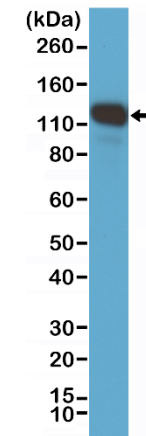
Warburgstr. 45 • 20354 Hamburg

www.dianova.de

<b>Product:</b>	Rabbit Monoclonal Antibody Anti-CD146 Rabbit Monoclonal Antibody, Clone RM249
<b>Catalog No.:</b>	31-1129-00
<b>Lot No.:</b>	
<b>Clone:</b>	RM249
<b>Specificity:</b>	This antibody reacts to human CD146 (Cell surface glycoprotein MUC18). This antibody may also react to mouse or rat CD146, as predicted by immunogen homology
<b>Application:</b>	Immunohistochemistry, Western Blot
<b>Immunogen:</b>	A synthetic peptide corresponding to the residues near C-terminus of human CD146
<b>Purity:</b>	Protein A affinity purified from an animal origin-free culture supernatant
<b>Size:</b>	100 µL
<b>Buffer:</b>	50% Glycerol/PBS with 1% BSA and 0.09% sodium azide
<b>Usage:</b>	IHC: 1:200 -1:500 dilution; WB: 1:1000 - 1:2000 dilution.
<b>Storage and Stability:</b>	Stable for 1 Year at -20.0°C from date of receipt.
<b>Country of Origin:</b>	U.S.A.
<b>Intended Use:</b>	<b>For Research Use Only Not for Diagnostic or Therapeutic Use</b>



Immunohistochemical staining of formalin fixed and paraffin embedded human breast cancer tissue sections using Anti-CD146 RM249 at a 1:400 dilution.



Western Blot of A375 cell lysate, using Anti-CD146 RM249 at a 1:1000 dilution, showed CD146 (~110 kDa) expression in A375 cells.