

Beratung und Vertrieb

Fon + 49 (0) 40 45 067 0

dianova

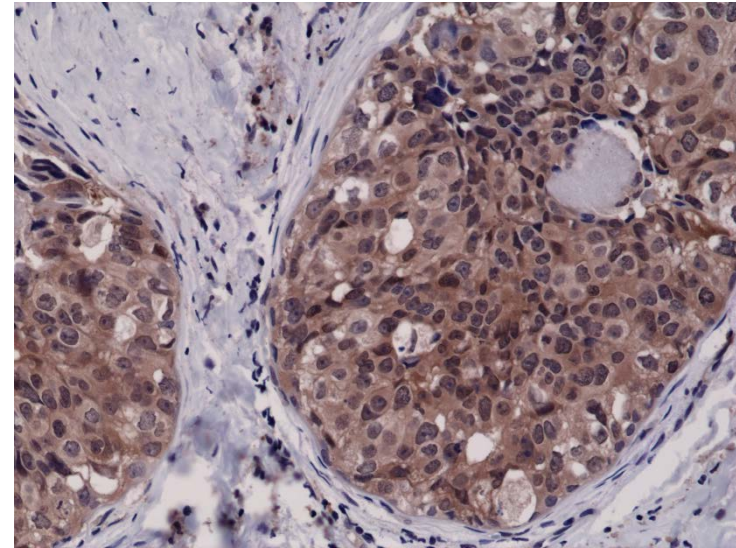
Fax + 49 (0) 40 450 67 490

info@dianova.de

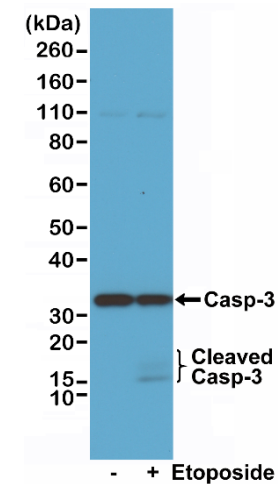
Warburgstr. 45 • 20354 Hamburg

www.dianova.de

Product:	Rabbit Monoclonal Antibody Anti-Caspase-3 Rabbit Monoclonal Antibody, Clone RM250
Catalog No.:	31-1130-00
Lot No.:	
Clone:	RM250
Specificity:	This antibody reacts to human full length caspase-3 (35 kDa) and the large fragment of caspase-3 resulting from cleavage (17 kDa).
Application:	Immunohistochemistry, Western Blot
Immunogen:	A synthetic peptide corresponding to residues within human Caspase-3 subunit p17
Purity:	Protein A affinity purified from an animal origin-free culture supernatant
Size:	100 µL
Buffer:	50% Glycerol/PBS with 1% BSA and 0.09% sodium azide
Usage:	IHC: 1:1000 -1:2500 dilution; WB: 1:1000 - 1:2000 dilution.
Storage and Stability:	Stable for 1 Year at -20.0°C from date of receipt.
Country of Origin:	U.S.A.
Intended Use:	For Research Use Only Not for Diagnostic or Therapeutic Use



Immunohistochemical staining of formalin fixed and paraffin embedded human breast cancer tissue sections using Anti-Caspase-3 RM250 at a 1:2500 dilution.



Western Blot of Jurkat cell lysate, untreated or treated with etoposide, using Anti-Caspase-3 RM250 at a 1:1000 dilution.