

Beratung und Vertrieb Fon + 49 (0) 40 45 067 0

Fax + 49 (0) 40 450 67 490

info@dianova.de

www.dianova.de

Warburgstr. 45 • 20354 Hamburg

**Product:** Rabbit Monoclonal Antibody  
Anti-Phospho-Akt (Ser473) Rabbit Monoclonal Antibody, Clone RM251

**Catalog No.:** 31-1131-00

**Lot No.:**

**Clone:** RM251

**Specificity:** This antibody reacts to Akt only when phosphorylated at Ser473. There is no cross-reactivity with Akt without phosphorylation at Ser473. This antibody may also react to bovine, mouse or rat Phospho-Akt (Ser473), as predicted by immunogen homology.

**Application:** Immunohistochemistry, Western Blot

**Immunogen:** A phospho-peptide corresponding to human Phospho-Akt (Ser473)

**Purity:** Protein A affinity purified from an animal origin-free culture supernatant

**Size:** 100 µL

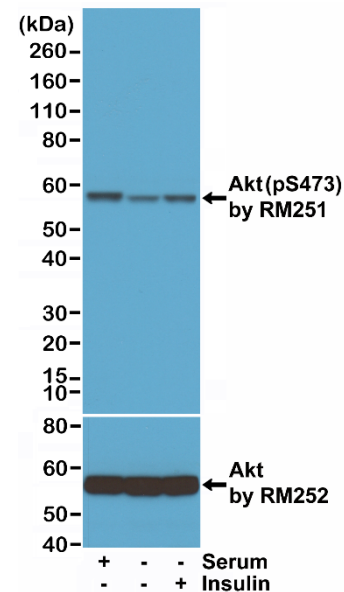
**Buffer:** 50% Glycerol/PBS with 1% BSA and 0.09% sodium azide

**Usage:** WB: 1:1000 -1:2000 dilution;  
IHC: 1:200 - 1:500 dilution.

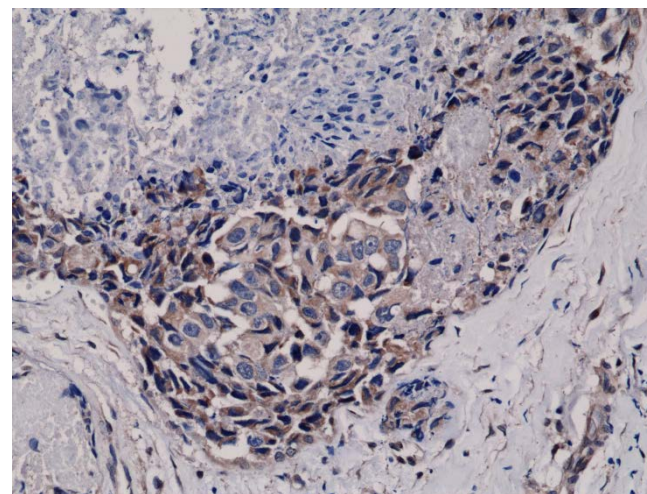
**Storage and Stability:** Stable for 1 Year at -20.0°C from date of receipt.

**Country of Origin:** U.S.A.

**Intended Use:** **For Research Use Only Not for Diagnostic or Therapeutic Use**



Western Blot of lysates from 293 cells either, grown in medium with serum, serum starved, or insulin treated. Using Anti-Phospho-Akt (Ser473) RM251 at a 1:1000 dilution or anti-Akt1 RM252 at a 1:1000 dilution.



Immunohistochemical staining of formalin fixed and paraffin embedded human breast cancer tissue sections using Anti-Phospho-Akt (Ser473) RM251 at a 1:400 dilution.