

Beratung und Vertrieb

Fon + 49 (0) 40 45 067 0

dianova

Fax + 49 (0) 40 450 67 490

info@dianova.de

Warburgstr. 45 • 20354 Hamburg

www.dianova.de

Product: Rabbit Monoclonal Antibody
Anti-alpha smooth muscle Actin Rabbit Monoclonal Antibody, Clone RM253

Catalog No.: 31-1133-00

Lot No.:

Clone: RM253

Specificity: This antibody reacts to human and mouse alpha smooth muscle Actin (alpha-Actin-2). This antibody may also react to bovine or rat alpha smooth muscle Actin, as predicted by immunogen homology

Application: Immunohistochemistry, Western Blot

Immunogen: A synthetic peptide corresponding to the N-terminus of human alpha smooth muscle Actin

Purity: Protein A affinity purified from an animal origin-free culture supernatant

Size: 100 µL

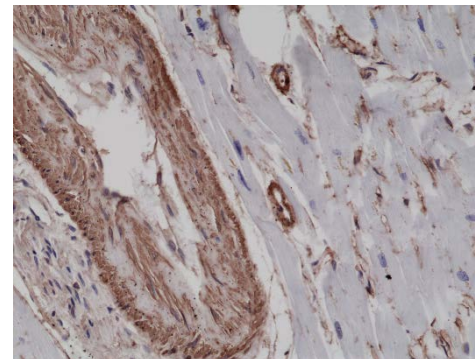
Buffer: 50% Glycerol/PBS with 1% BSA and 0.09% sodium azide

Usage: IHC: 1:100 - 1:2500 dilution;
WB: 1:1000 - 1:2000 dilution.

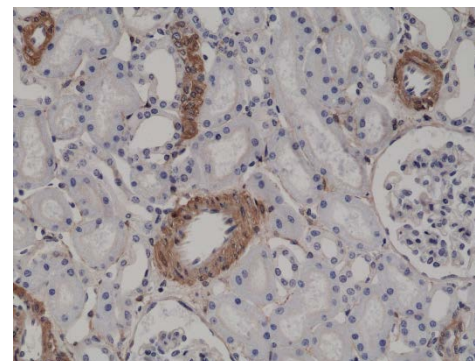
Storage and Stability: Stable for 1 Year at -20.0°C from date of receipt.

Country of Origin: U.S.A.

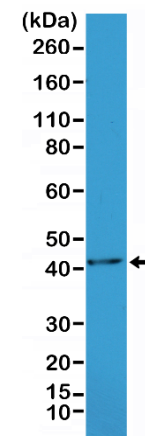
Intended Use: For Research Use Only Not for Diagnostic or Therapeutic Use



Immunohistochemical staining of formalin fixed and paraffin embedded human heart tissue sections using Anti-alpha smooth muscle Actin RM253 at a 1:2500 dilution.



Immunohistochemical staining of formalin fixed and paraffin embedded human kidney tissue sections using Anti-alpha smooth muscle Actin RM253 at a 1:2500 dilution.



Western Blot of mouse heart tissue lysate, using Anti-alpha smooth muscle Actin RM253 at a 1:1000 dilution.