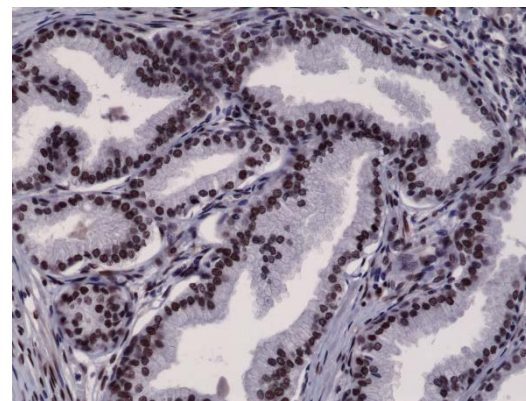
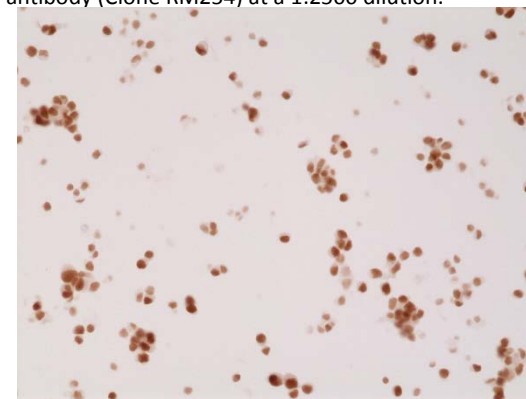


Certificate of Analysis

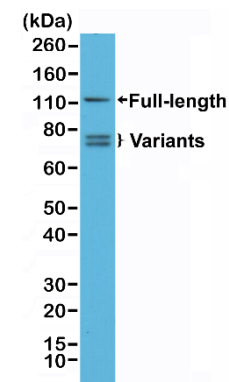
Product:	Rabbit Monoclonal Antibody Anti-Androgen Receptor (N-Term) Rabbit Monoclonal Antibody, Clone RM254
Catalog No.:	31-1135-00
Lot No.:	
Clone:	RM254
Specificity:	This antibody reacts to full length androgen receptor and splice variants.
Application:	Immunohistochemistry, Western Blot
Immunogen:	A peptide corresponding to the N-terminus of Androgen Receptor
Purity:	Protein A affinity purified from an animal origin-free culture supernatant.
Size:	100 µL
Buffer:	50% Glycerol/PBS with 1% BSA and 0.09% sodium azide
Usage:	IHC: 1:1000 - 1:2500 dilution; WB: 1:100 - 1:1000 dilution.
Storage and Stability:	Stable for 1 Year at -20.0°C from date of receipt.
Country of Origin:	U.S.A.
Intended Use:	For Research Use Only Not for Diagnostic or Therapeutic Use



Immunohistochemical staining of formalin fixed and paraffin embedded human prostate cancer tissue section using anti-Androgen Receptor (N-term) rabbit monoclonal antibody (Clone RM254) at a 1:2500 dilution.



Immunohistochemical staining of formalin fixed and paraffin embedded 22RV1 cells sections using anti-Androgen Receptor (N-term) rabbit monoclonal antibody (Clone RM254) at a 1:2500 dilution.



Western Blot analysis of 22RV1 whole cell lysates, using anti-Androgen Receptor (N-term) rabbit monoclonal antibody (Clone RM254), showed full length androgen receptor and splice variants expressed in 22RV1 cells.