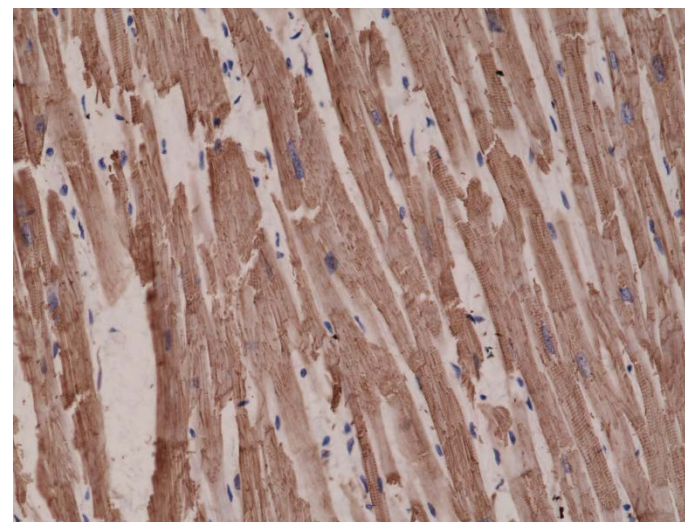
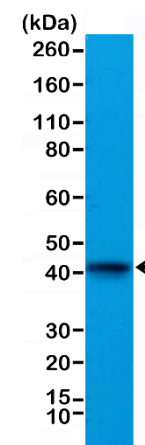


Certificate of Analysis

Product:	Rabbit Monoclonal Antibody Anti-Alpha-cardiac actin (ACTC1) Rabbit Monoclonal Antibody, Clone RM257
Catalog No.:	31-1138-00
Lot No.:	
Clone:	RM257
Specificity:	This antibody reacts to human and mouse alpha cardiac actin (Actin, alpha cardiac muscle 1). This antibody may also react to bovine or rat alpha-cardiac actin, as predicted by immunogen homology
Application:	Immunohistochemistry, Western Blot
Immunogen:	A synthetic peptide corresponding to the N-terminus of human alpha-cardiac actin
Purity:	Protein A affinity purified from an animal origin-free culture supernatant
Size:	100 µL
Buffer:	50% Glycerol/PBS with 1% BSA and 0.09% sodium azide
Usage:	IHC: 1:1000 -1:2000 dilution; WB: 1:1000 - 1:2000 dilution.
Storage and Stability:	Stable for 1 Year at -20.0°C from date of receipt.
Country of Origin:	U.S.A.
Intended Use:	For Research Use Only Not for Diagnostic or Therapeutic Use



Immunohistochemical staining of formalin fixed and paraffin embedded human heart tissue sections using anti-alpha-cardiac actin rabbit monoclonal antibody, Clone RM257 at a 1:1000 dilution.



Western Blot of mouse heart tissue lysate, using anti-alpha-cardiac actin rabbit monoclonal antibody (Clone RM257) at a 1:1000 dilution.