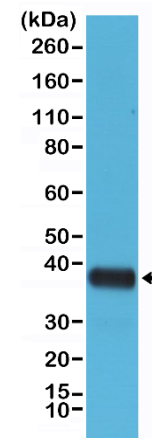
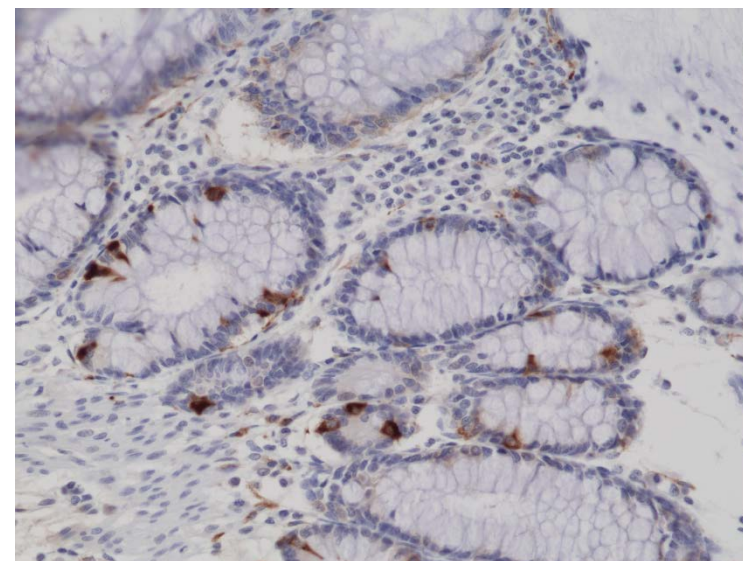


Certificate of Analysis

Product:	Rabbit Monoclonal Antibody Anti-Synaptophysin Rabbit Monoclonal Antibody, Clone RM258
Catalog No.:	31-1139-00
Lot No.:	
Clone:	RM258
Specificity:	This antibody reacts to human and mouse Synaptophysin.
Application:	Western Blot, Immunohistochemistry
Immunogen:	A peptide corresponding to the C-terminus of Synaptophysin
Purity:	Protein A affinity purified from an animal origin-free culture supernatant
Size:	100 µL
Buffer:	50% Glycerol/PBS with 1% BSA and 0.09% sodium azide
Usage:	WB: 1:1000 - 1:2000 dilution; IHC: 1:200 – 1:500 dilution.
Storage and Stability:	Stable for 1 Year at -20.0°C from date of receipt.
Country of Origin:	U.S.A.
Intended Use:	For Research Use Only Not for Diagnostic or Therapeutic Use



Western Blot analysis of mouse brain tissue lysates, using anti-Synaptophysin rabbit monoclonal antibody (Clone RM258), showed Synaptophysin (~38 kDa) expression in mouse brain.



Immunohistochemical staining of formalin fixed and paraffin embedded human colon tissue sections using anti-Synaptophysin rabbit monoclonal antibody (Clone RM258) at a 1:200 dilution.