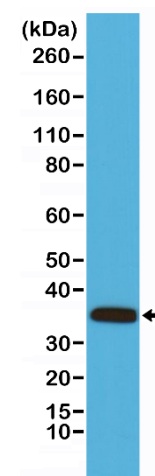
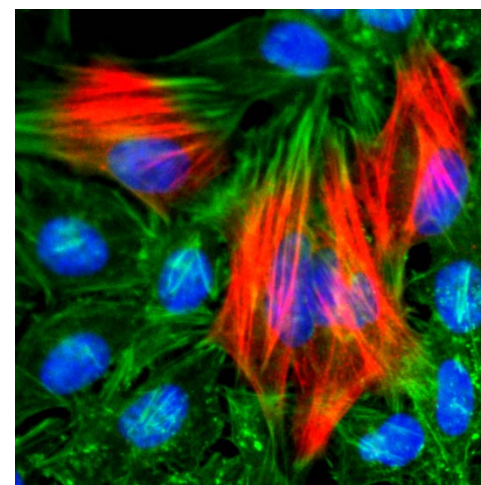


Certificate of Analysis

Product:	Rabbit Monoclonal Antibody Anti-Calponin-1 Rabbit Monoclonal Antibody, Clone RM262
Catalog No.:	31-1143-00
Lot No.:	
Clone:	RM262
Specificity:	This antibody reacts to human or mouse Calponin-1.
Application:	Western Blot, Immunocytochemistry
Immunogen:	A peptide corresponding to the C-terminus of human Calponin-1
Purity:	Protein A affinity purified from an animal origin-free culture supernatant
Size:	100 µL
Buffer:	50% Glycerol/PBS with 1% BSA and 0.09% sodium azide
Usage:	WB: 1:1000 - 1:2000 dilution; ICC: 1:100 – 1:200
Storage and Stability:	Stable for 1 Year at -20.0°C from date of receipt.
Country of Origin:	U.S.A.
Intended Use:	For Research Use Only Not for Diagnostic or Therapeutic Use



Western Blot analysis of mouse heart tissue lysates, using anti- Calponin-1 rabbit monoclonal antibody (Clone RM262), shows Calponin-1 expression in mouse heart tissue.



Immunocytochemistry of HeLa cells, using Calponin-1 Rabbit Monoclonal Antibody (Clone RM262) (red). Actin filaments have been labeled with fluorescein phalloidin (green), and nucleus stained with DAPI (blue).