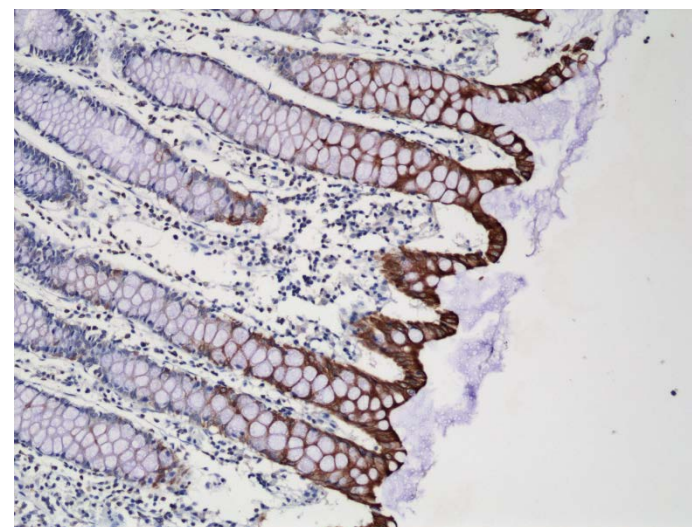
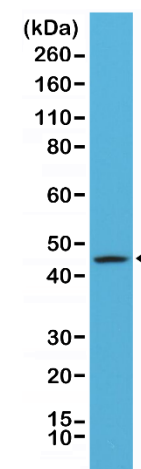


Certificate of Analysis

Product:	Rabbit Monoclonal Antibody Anti-CK20 (Cytokeratin-20) Rabbit Monoclonal Antibody, Clone RM283
Catalog No.:	31-1166-00
Lot No.:	
Clone:	RM283
Specificity:	This antibody reacts to human CK20 (Cytokeratin-20).
Application:	Immunohistochemistry, Western Blot
Immunogen:	A peptide corresponding to the C-terminus of human Cytokeratin-20
Purity:	Protein A affinity purified from an animal origin-free culture supernatant
Size:	100 µL
Buffer:	50% Glycerol/PBS with 1% BSA and 0.09% sodium azide
Usage:	IHC: 1:100 -1:250 dilution; WB: 1:1000 - 1:2000 dilution.
Storage and Stability:	Stable for 1 Year at -20.0°C from date of receipt.
Country of Origin:	U.S.A.
Intended Use:	For Research Use Only Not for Diagnostic or Therapeutic Use



Immunohistochemical staining of formalin fixed and paraffin embedded human colon tissue sections using Anti-CK20 Rabbit Monoclonal Antibody (Clone RM283) at a 1:250 dilution.



Western Blot of A431 cells lysates using Anti-CK20 Rabbit Monoclonal Antibody (Clone RM283) at a 1:1000 dilution.