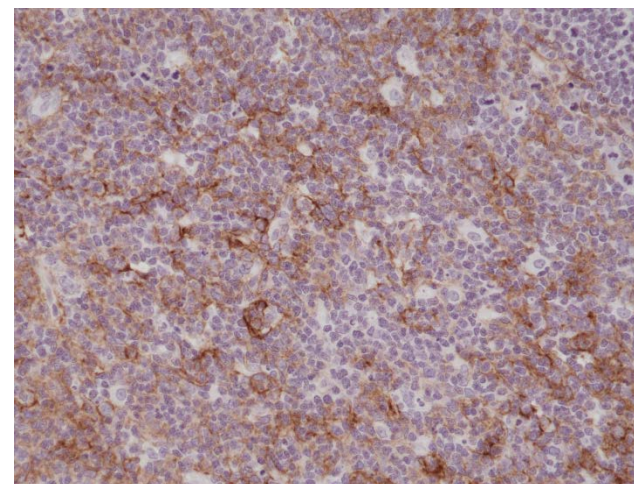
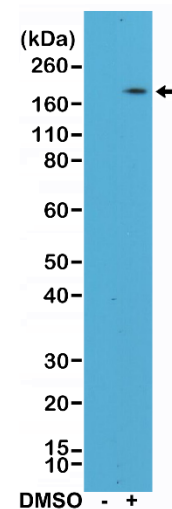


Certificate of Analysis

Product:	Rabbit Monoclonal Antibody Anti-CD11b (Integrin alpha-M) Rabbit Monoclonal Antibody, Clone RM290
Catalog No.:	31-1174-00
Lot No.:	
Clone:	RM290
Specificity:	This antibody reacts to human CD11b (Integrin alpha-M).
Application:	Immunohistochemistry, Western Blot
Immunogen:	A peptide corresponding to the C-terminus of human CD11b (Integrin alpha-M).
Purity:	Protein A affinity purified from an animal origin-free culture supernatant
Size:	100 µL
Buffer:	50% Glycerol/PBS with 1% BSA and 0.09% sodium azide
Usage:	IHC: 1:100 -1:200 dilution; WB: 1:200 - 1:500 dilution.
Storage and Stability:	Stable for 1 Year at -20.0°C from date of receipt.
Country of Origin:	U.S.A.
Intended Use:	For Research Use Only Not for Diagnostic or Therapeutic Use



Immunohistochemical staining of formalin fixed and paraffin embedded human tonsil tissue sections using anti-CD11b rabbit monoclonal antibody (clone RM290) at a 1:200 dilution.



Western Blot of HL60 cell lysates, nontreated (-) or treated (+) with DMSO using anti-CD11b rabbit monoclonal antibody (clone RM290) at a 1:400 dilution.