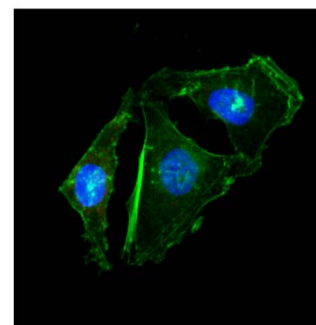


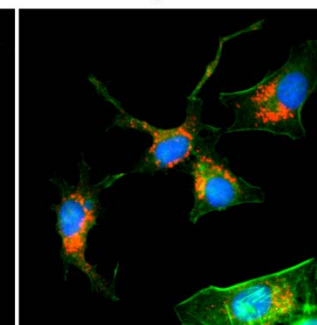
Certificate of Analysis

Product:	Rabbit Monoclonal Antibody Anti-LC3B Rabbit Monoclonal Antibody, Clone RM293
Catalog No.:	31-1177-00
Lot No.:	
Clone:	RM293
Specificity:	This antibody reacts to human LC3B (Autophagy-related protein LC3 B) (Microtubule-associated proteins 1A/1B light chain 3B). It may also react to mouse or rat LC3B, as predicted by immunogen homology.
Application:	Immunocytochemistry, Immunohistochemistry, Western Blot
Immunogen:	A peptide corresponding to the N-terminus of human LC3B.
Purity:	Protein A affinity purified from an animal origin-free culture supernatant
Size:	100 µL
Buffer:	50% Glycerol/PBS with 1% BSA and 0.09% sodium azide
Usage:	ICC: 1:100 - 1:200 dilution; IHC: 1:100 - 1:200 dilution; WB: 1:100 - 1:200 dilution.
Storage and Stability:	Stable for 1 Year at -20.0°C from date of receipt.
Country of Origin:	U.S.A.
Intended Use:	For Research Use Only Not for Diagnostic or Therapeutic Use

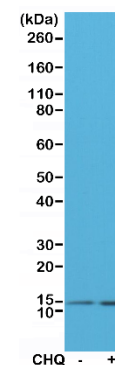
Control



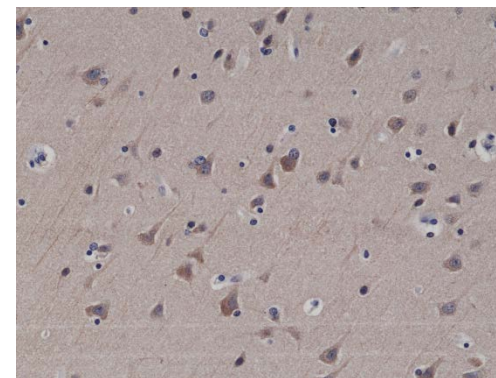
CHQ-treated



Immunocytochemical staining of HeLa cells untreated or treated with chloroquine (CHQ), using anti-LC3B rabbit monoclonal Antibody Clone RM293 (red) at a 1:200 dilution. Actin filaments have been labeled with fluorescein phalloidin (green), and nucleus labeled with DAPI (blue).



Western Blot of cell lysates of HeLa untreated or treated with chloroquine (CHQ), using anti-LC3B rabbit monoclonal antibody (clone RM293) at a 1:200 dilution.



Immunohistochemical staining of formalin fixed and paraffin embedded human brain tissue sections using anti-LC3B rabbit monoclonal antibody (clone RM293) at a 1:200 dilution.