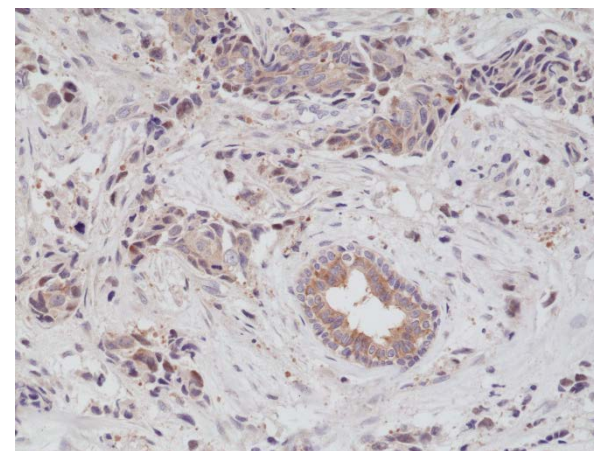
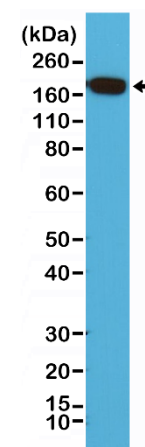


Certificate of Analysis

Product:	Rabbit Monoclonal Antibody Anti-EGF Receptor Rabbit Monoclonal Antibody, Clone RM294
Catalog No.:	31-1178-00
Lot No.:	
Clone:	RM294
Specificity:	This antibody reacts to human EGF Receptor (c-ErbB-1). No cross reactivity with HER2, HER3, or HER4
Application:	Immunohistochemistry, Western Blot
Immunogen:	A peptide corresponding to the C-terminus of human EGF Receptor (c-ErbB-1).
Purity:	Protein A affinity purified from an animal origin-free culture supernatant
Size:	100 µL
Buffer:	50% Glycerol/PBS with 1% BSA and 0.09% sodium azide
Usage:	IHC: 1:100 -1:200 dilution; WB: 1:200 - 1:500 dilution.
Storage and Stability:	Stable for 1 Year at -20.0°C from date of receipt.
Country of Origin:	U.S.A.
Intended Use:	For Research Use Only Not for Diagnostic or Therapeutic Use



Immunohistochemical staining of formalin fixed and paraffin embedded human breast cancer tissue sections using anti-EGF Receptor rabbit monoclonal antibody (clone RM294) at a 1:200 dilution.



Western Blot of HeLa cell lysates using anti-EGF Receptor rabbit monoclonal antibody (clone RM294) at a 1:200 dilution.