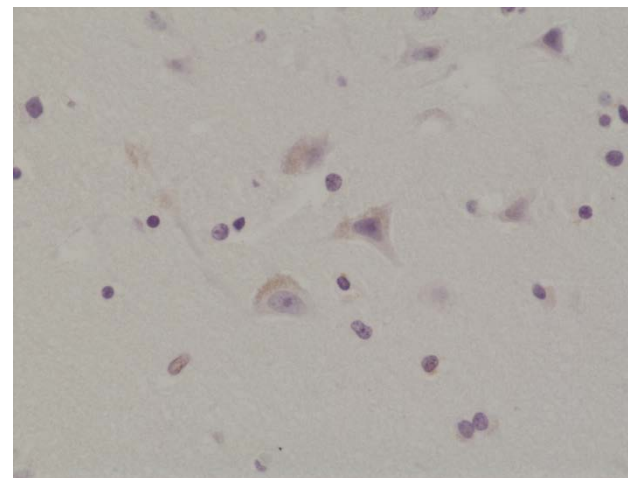
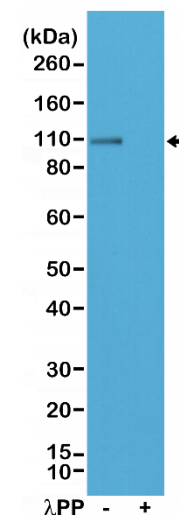


Certificate of Analysis

Product:	Rabbit Monoclonal Antibody Anti-Phospho-AMPA Receptor (GluR 1) (Ser845) Rabbit Monoclonal Antibody, Clone RM296
Catalog No.:	31-1179-00
Lot No.:	
Clone:	RM296
Specificity:	This antibody reacts to human Glutamate Receptor 1, AMPA Receptor (GluR1) only when phosphorylated at Ser845. There is no cross-reactivity to GluR1 that is not phosphorylated at Ser845. This antibody may also react to mouse or rat Phospho-AMPA Receptor (GluR1) (Ser845) as predicted by immunogen homology.
Application:	Immunohistochemistry, Western Blot
Immunogen:	A phospho-peptide corresponding to human Phospho-AMPA Receptor (GluR1) (Ser845)
Purity:	Protein A affinity purified from an animal origin-free culture supernatant
Size:	100 µL
Buffer:	50% Glycerol/PBS with 1% BSA and 0.09% sodium azide
Usage:	WB: 1:1000 -1:2000 dilution; IHC: 1:500 - 1:1000 dilution.
Storage and Stability:	Stable for 1 Year at -20.0°C from date of receipt.
Country of Origin:	U.S.A.
Intended Use:	For Research Use Only Not for Diagnostic or Therapeutic Use



Immunohistochemical staining of formalin fixed and paraffin embedded human brain tissue section using Anti-Phospho-AMPA Receptor (GluR 1) (Ser845) rabbit monoclonal antibody (clone RM296) at a 1:200 dilution.



Western Blot of mouse brain tissue lysate, non-treated (-) or dephosphorylated (+) with Lambda Protein Phosphatase (λ .PP), using Anti-Phospho-AMPA Receptor (GluR 1) (Ser845) rabbit monoclonal antibody (clone RM296) at a 1:200 dilution.