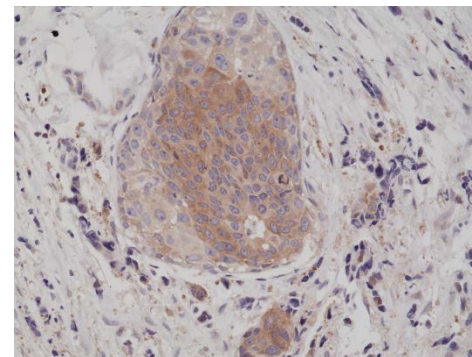
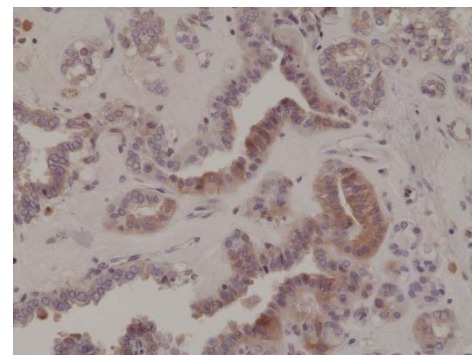


Certificate of Analysis

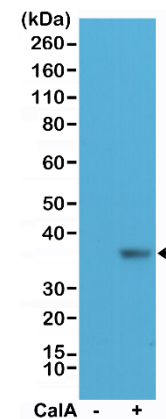
Product:	Rabbit Monoclonal Antibody Anti-Phospho-eIF-2 α (Ser51) Rabbit Monoclonal Antibody, Clone RM298
Catalog No.:	31-1183-00
Lot No.:	
Clone:	RM298
Specificity:	This antibody reacts to human eIF-2 α (eukaryotic translation initiation factor 2 subunit alpha) only when phosphorylated at Ser51. There is no cross-reactivity to eIF-2 α not phosphorylated at Ser51. This antibody may also react to mouse or rat Phospho-eIF-2 α (Ser51), as predicted by immunogen homology.
Application:	Immunohistochemistry, Western Blot
Immunogen:	A phospho-peptide corresponding to human Phospho-eIF-2 α (Ser51)
Purity:	Protein A affinity purified from an animal origin-free culture supernatant
Size:	100 μ L
Buffer:	50% Glycerol/PBS with 1% BSA and 0.09% sodium azide
Usage:	WB: 1:100 -1:200 dilution; IHC: 1:100 - 1:200 dilution.
Storage and Stability:	Stable for 1 Year at -20.0°C from date of receipt.
Country of Origin:	U.S.A.
Intended Use:	For Research Use Only Not for Diagnostic or Therapeutic Use



Immunohistochemical staining of formalin fixed and paraffin embedded human breast cancer tissue section using anti-phospho-eIF-2 α (Ser51) rabbit monoclonal antibody (clone RM298) at a 1:200 dilution.



Immunohistochemical staining of formalin fixed and paraffin embedded human thyroid cancer tissue section using anti-phospho-eIF-2 α (Ser51) rabbit monoclonal antibody (clone RM298) at a 1:200 dilution.



Western Blot of HeLa cell lysate nontreated (-) or treated (+) with Calyculin A (CaIA), using anti-phospho-eIF-2 α (Ser51) rabbit monoclonal antibody (clone RM298) at a 1:200 dilution.