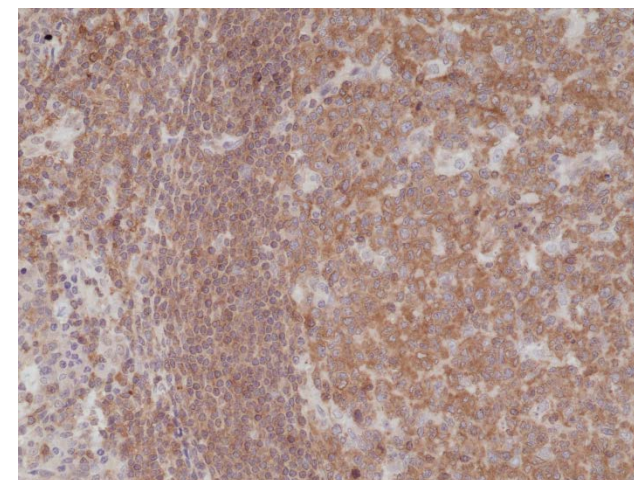
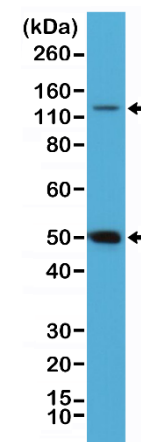


Certificate of Analysis

Product:	Rabbit Monoclonal Antibody Anti-NF-kappa-B p105/p50 Rabbit Monoclonal Antibody, Clone RM299
Catalog No.:	31-1184-00
Lot No.:	
Clone:	RM299
Specificity:	This antibody reacts to human nuclear factor NF-kappa-B p105 subunit and p50 subunit. It may also react to mouse or rat NF-kappa-B p105/p50, as predicted by immunogen homology.
Application:	Immunohistochemistry, Western Blot
Immunogen:	A peptide corresponding to residues in the human NF-kappa-B p105 subunit and p50 subunit.
Purity:	Protein A affinity purified from an animal origin-free culture supernatant
Size:	100 µL
Buffer:	50% Glycerol/PBS with 1% BSA and 0.09% sodium azide
Usage:	IHC: 1:100 -1:200 dilution; WB: 1:100 - 1:200 dilution.
Storage and Stability:	Stable for 1 Year at -20.0°C from date of receipt.
Country of Origin:	U.S.A.
Intended Use:	For Research Use Only Not for Diagnostic or Therapeutic Use



Immunohistochemical staining of formalin fixed and paraffin embedded human tonsil tissue section using anti-NF-kappa-B p105/p50 rabbit monoclonal antibody (clone RM299) at a 1:200 dilution.



Western Blot of HeLa cell lysate using anti-NF-kappa-B p105/p50 rabbit monoclonal antibody (clone RM299) at a 1:100 dilution.